

Datasheet for ABIN7263475  
**anti-LIM Domain Binding 3 Protein antibody**

## 5 Images

[Go to Product page](#)

## Overview

Quantity:	200 µL
Target:	LIM Domain Binding 3 Protein (LDB3)
Reactivity:	Human, Mouse, Rat
Host:	Rabbit
Clonality:	Polyclonal
Conjugate:	This LIM Domain Binding 3 Protein antibody is un-conjugated
Application:	Immunofluorescence (IF)

## Product Details

Immunogen:	Recombinant fusion protein of human LDB3 (NP_001073585.1).
Isotype:	IgG
Characteristics:	Polyclonal Antibody
Purification:	Affinity purification

## Target Details

Target:	LIM Domain Binding 3 Protein (LDB3)
Alternative Name:	LDB3 ( <a href="#">LDB3 Products</a> )
Background:	This gene encodes a PDZ domain-containing protein. PDZ motifs are modular protein-protein interaction domains consisting of 80-120 amino acid residues. PDZ domain-containing proteins interact with each other in cytoskeletal assembly or with other proteins involved in targeting and clustering of membrane proteins. The protein encoded by this gene interacts with alpha-

## Target Details

actinin-2 through its N-terminal PDZ domain and with protein kinase C via its C-terminal LIM domains. The LIM domain is a cysteine-rich motif defined by 50-60 amino acids containing two zinc-binding modules. This protein also interacts with all three members of the myozenin family. Mutations in this gene have been associated with myofibrillar myopathy and dilated cardiomyopathy. Alternatively spliced transcript variants encoding different isoforms have been identified, all isoforms have N-terminal PDZ domains while only longer isoforms (1, 2 and 5) have C-terminal LIM domains.

Gene ID: 11155

UniProt: [075112](#)

## Application Details

Application Notes: IF 1:50-1:200

Restrictions: For Research Use only

## Handling

Format: Liquid

Concentration: 1 mg/mL

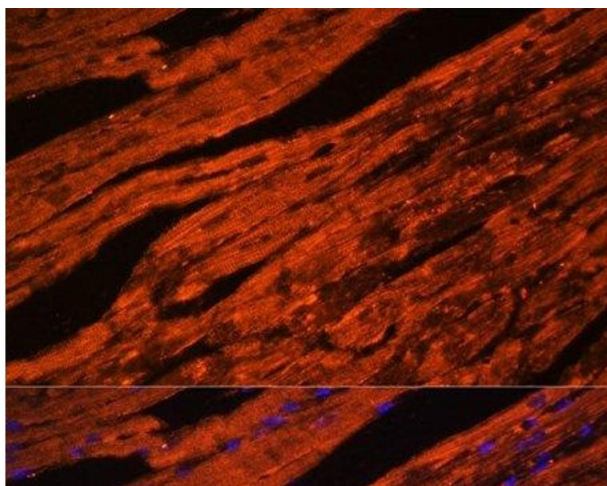
Buffer: PBS with 0.02 % sodium azide, 50 % glycerol, pH 7.3

Preservative: Sodium azide

Precaution of Use: This product contains Sodium azide: a POISONOUS AND HAZARDOUS SUBSTANCE which should be handled by trained staff only.

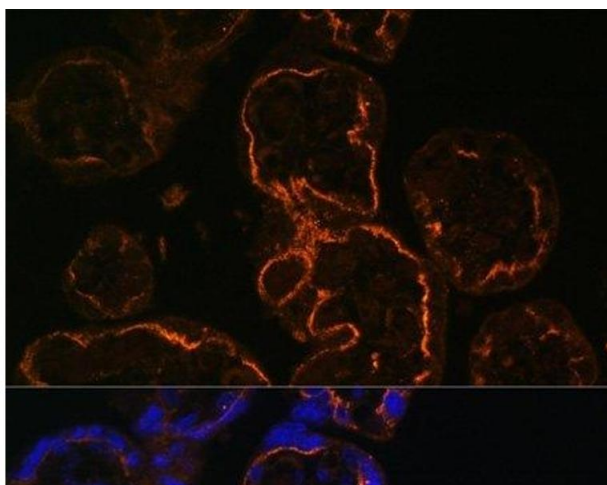
Storage: -20 °C

Storage Comment: Store at -20°C. Avoid freeze / thaw cycles.



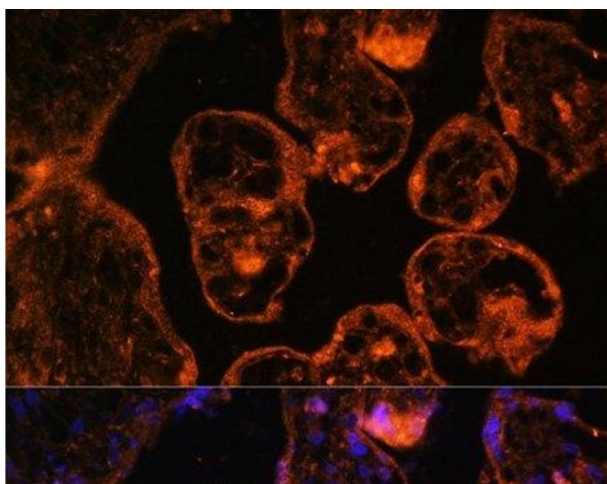
#### Immunofluorescence

**Image 1.** Immunofluorescence analysis of Mouse heart cells using LDB3 Polyclonal Antibody at dilution of 1:100. Blue: DAPI for nuclear staining.



#### Immunofluorescence

**Image 2.** Immunofluorescence analysis of Human placenta cells using LDB3 Polyclonal Antibody at dilution of 1:100. Blue: DAPI for nuclear staining.



#### Immunofluorescence

**Image 3.** Immunofluorescence analysis of Human placenta cells using LDB3 Polyclonal Antibody at dilution of 1:100. Blue: DAPI for nuclear staining.

Please check the [product details page](#) for more images. Overall 5 images are available for ABIN7263475.