



[Go to Product page](#)

Datasheet for ABIN7263543

## anti-SMAD9 antibody

### 7 Images

#### Overview

Quantity:	200 µL
Target:	SMAD9
Reactivity:	Human, Mouse, Rat
Host:	Rabbit
Clonality:	Polyclonal
Conjugate:	This SMAD9 antibody is un-conjugated
Application:	Immunohistochemistry (IHC), Immunofluorescence (IF)

#### Product Details

Immunogen:	Recombinant fusion protein of human SMAD9 (NP_005896.1).
Isotype:	IgG
Characteristics:	Polyclonal Antibody
Purification:	Affinity purification

#### Target Details

Target:	SMAD9
Alternative Name:	SMAD9 ( <a href="#">SMAD9 Products</a> )
Background:	The protein encoded by this gene is a member of the SMAD family, which transduces signals from TGF-beta family members. The encoded protein is activated by bone morphogenetic proteins and interacts with SMAD4. Two transcript variants encoding different isoforms have been found for this gene.

## Target Details

Gene ID: 4093

UniProt: [O15198](#)

## Application Details

Application Notes: IHC 1:50-1:200 IF 1:50-1:200

Restrictions: For Research Use only

## Handling

Format: Liquid

Concentration: 1 mg/mL

Buffer: PBS with 0.02 % sodium azide, 50 % glycerol, pH 7.3

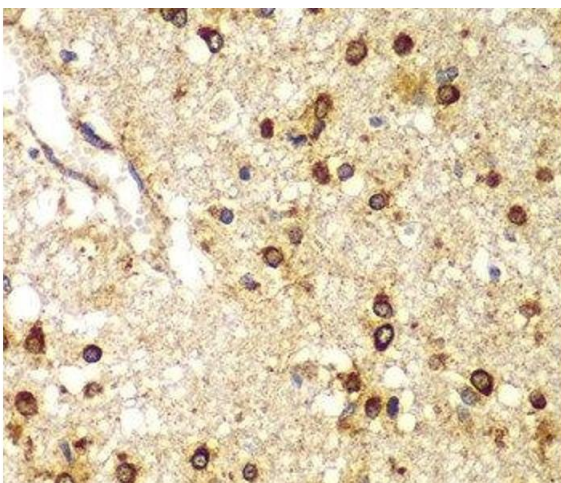
Preservative: Sodium azide

Precaution of Use: This product contains Sodium azide: a POISONOUS AND HAZARDOUS SUBSTANCE which should be handled by trained staff only.

Storage: -20 °C

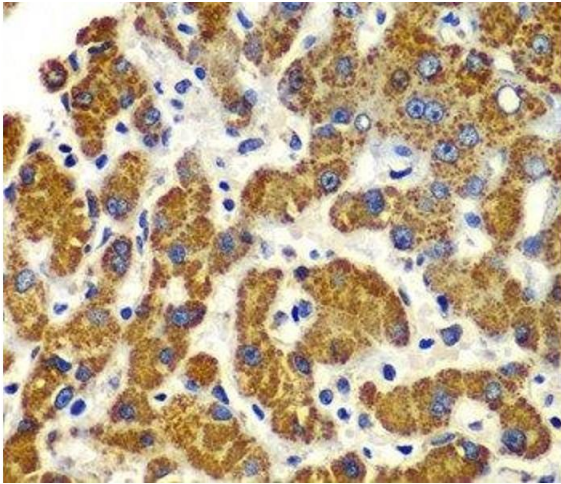
Storage Comment: Store at -20°C. Avoid freeze / thaw cycles.

## Images



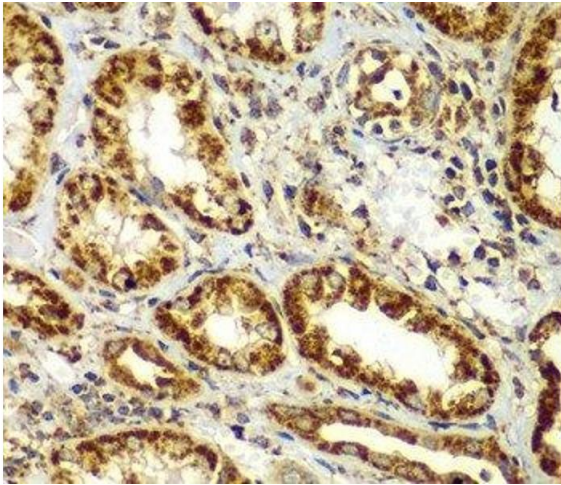
### Immunohistochemistry (Paraffin-embedded Sections)

**Image 1.** Immunohistochemistry of paraffin-embedded Human brain cancer using SMAD9 Polyclonal Antibody at dilution of 1:100 (40x lens).



**Immunohistochemistry (Paraffin-embedded Sections)**

**Image 2.** Immunohistochemistry of paraffin-embedded Human liver damage using SMAD9 Polyclonal Antibody at dilution of 1:100 (40x lens).



**Immunohistochemistry (Paraffin-embedded Sections)**

**Image 3.** Immunohistochemistry of paraffin-embedded Human kidney using SMAD9 Polyclonal Antibody at dilution of 1:100 (40x lens).

Please check the [product details page](#) for more images. Overall 7 images are available for ABIN7263543.