

Datasheet for ABIN7263551

**anti-WIP1 antibody****1** Image[Go to Product page](#)

## Overview

Quantity:	200 µL
Target:	WIP1
Reactivity:	Human, Mouse, Rat
Host:	Rabbit
Clonality:	Polyclonal
Conjugate:	This WIP1 antibody is un-conjugated
Application:	Immunohistochemistry (IHC)

## Product Details

Immunogen:	Recombinant fusion protein of human WIP1 (NP_060453.3).
Isotype:	IgG
Characteristics:	Polyclonal Antibody
Purification:	Affinity purification

## Target Details

Target:	WIP1
Alternative Name:	WIP1 ( <a href="#">WIP1 Products</a> )
Background:	This gene encodes a WD40 repeat protein. Members of the WD40 repeat family are key components of many essential biologic functions. They regulate the assembly of multiprotein complexes by presenting a beta-propeller platform for simultaneous and reversible protein-protein interactions. Members of the WIP1 subfamily of WD40 repeat proteins have a 7-bladed

## Target Details

propeller structure and contain a conserved motif for interaction with phospholipids. Alternative splicing results in multiple transcript variants.

Gene ID:	55062
UniProt:	<a href="#">Q5MNZ9</a>
Pathways:	<a href="#">Nuclear Hormone Receptor Binding</a> , <a href="#">ER-Nucleus Signaling</a>

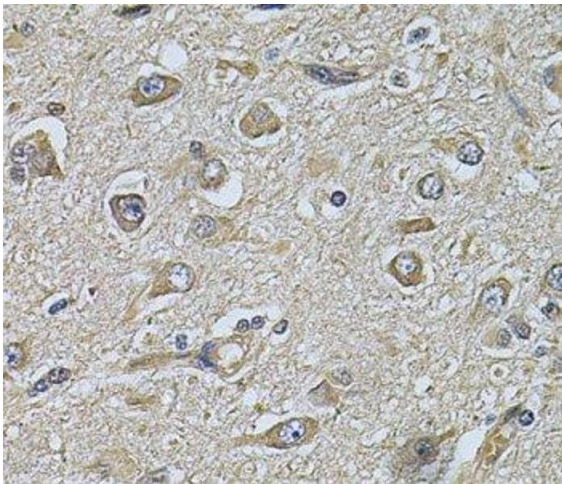
## Application Details

Application Notes:	IHC 1:50-1:200
Restrictions:	For Research Use only

## Handling

Format:	Liquid
Concentration:	1 mg/mL
Buffer:	PBS with 0.02 % sodium azide, 50 % glycerol, pH 7.3
Preservative:	Sodium azide
Precaution of Use:	This product contains Sodium azide: a POISONOUS AND HAZARDOUS SUBSTANCE which should be handled by trained staff only.
Storage:	-20 °C
Storage Comment:	Store at -20°C. Avoid freeze / thaw cycles.

## Images



**Immunohistochemistry (Paraffin-embedded Sections)**

**Image 1.** Immunohistochemistry of paraffin-embedded Human brain cancer using WIP1 Polyclonal Antibody at dilution of 1:100 (40x lens).