



Datasheet for ABIN7263631 anti-14-3-3 zeta antibody



[Go to Product page](#)

3 Images

Overview

Quantity:	200 µL
Target:	14-3-3 zeta (YWHAZ)
Reactivity:	Human, Mouse, Rat
Host:	Rabbit
Clonality:	Polyclonal
Conjugate:	This 14-3-3 zeta antibody is un-conjugated
Application:	Western Blotting (WB), Immunohistochemistry (IHC)

Product Details

Immunogen:	A synthetic peptide of human YWHAZ (NP_001129171.1).
Isotype:	IgG
Characteristics:	Polyclonal Antibody
Purification:	Affinity purification

Target Details

Target:	14-3-3 zeta (YWHAZ)
Alternative Name:	YWHAZ (YWHAZ Products)
Background:	This gene product belongs to the 14-3-3 family of proteins which mediate signal transduction by binding to phosphoserine-containing proteins. This highly conserved protein family is found in both plants and mammals, and this protein is 99 % identical to the mouse, rat and sheep orthologs. The encoded protein interacts with IRS1 protein, suggesting a role in regulating

Target Details

insulin sensitivity. Several transcript variants that differ in the 5' UTR but that encode the same protein have been identified for this gene.

Molecular Weight: Observed_MW: 28 kDa
Calculated_MW: 19 kDa/27 kDa

Gene ID: 7534

UniProt: [P63104](#)

Pathways: [Apoptosis](#), [Hormone Transport](#), [Myometrial Relaxation and Contraction](#), [Regulation of Leukocyte Mediated Immunity](#), [Positive Regulation of Immune Effector Process](#), [Synaptic Membrane](#), [Production of Molecular Mediator of Immune Response](#), [Maintenance of Protein Location](#)

Application Details

Application Notes: WB 1:500-1:2000 IHC 1:50-1:200

Restrictions: For Research Use only

Handling

Format: Liquid

Concentration: 1 mg/mL

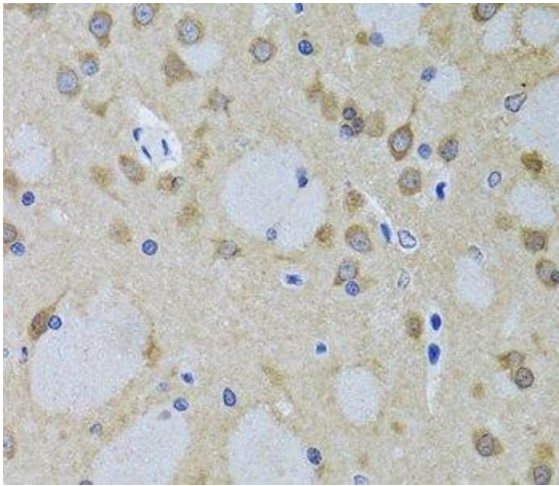
Buffer: PBS with 0.02 % sodium azide, 50 % glycerol, pH 7.3

Preservative: Sodium azide

Precaution of Use: This product contains Sodium azide: a POISONOUS AND HAZARDOUS SUBSTANCE which should be handled by trained staff only.

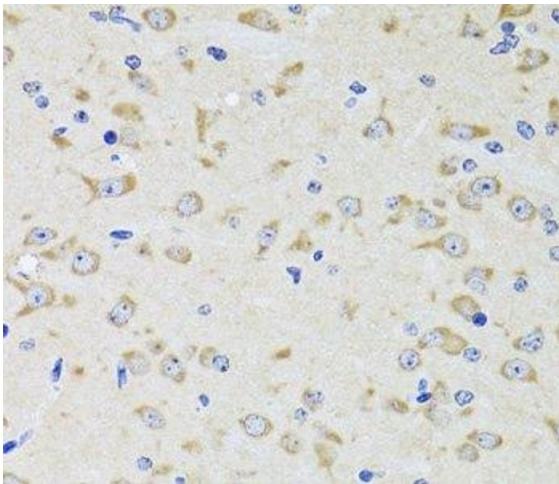
Storage: -20 °C

Storage Comment: Store at -20°C. Avoid freeze / thaw cycles.



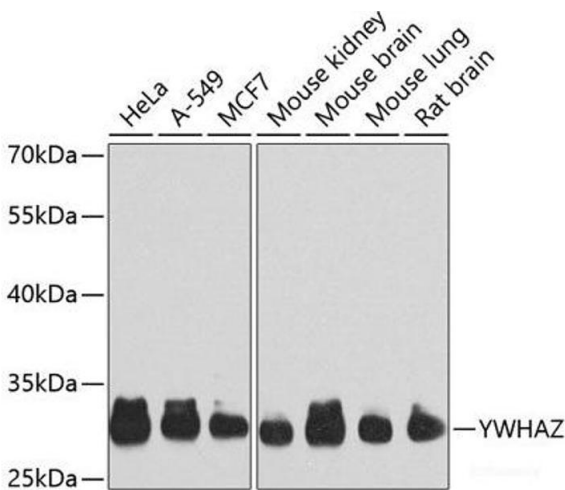
Immunohistochemistry (Paraffin-embedded Sections)

Image 1. Immunohistochemistry of paraffin-embedded Mouse brain using YWHAZ Polyclonal Antibody at dilution of 1:100 (40x lens).



Immunohistochemistry (Paraffin-embedded Sections)

Image 2. Immunohistochemistry of paraffin-embedded Rat brain using YWHAZ Polyclonal Antibody at dilution of 1:100 (40x lens).



Western Blotting

Image 3. Western blot analysis of extracts of various cell lines using YWHAZ Polyclonal Antibody at dilution of 1:1000.