

Datasheet for ABIN7263649  
**anti-Cholesterol Esterase antibody**[Go to Product page](#)

## 1 Image

## Overview

Quantity:	200 µL
Target:	Cholesterol Esterase (CEL)
Reactivity:	Human, Mouse, Rat
Host:	Rabbit
Clonality:	Polyclonal
Conjugate:	This Cholesterol Esterase antibody is un-conjugated
Application:	Western Blotting (WB)

## Product Details

Immunogen:	A synthetic peptide of human CEL
Isotype:	IgG
Characteristics:	Polyclonal Antibody
Purification:	Affinity purification

## Target Details

Target:	Cholesterol Esterase (CEL)
Alternative Name:	CEL ( <a href="#">CEL Products</a> )
Background:	The protein encoded by this gene is a glycoprotein secreted from the pancreas into the digestive tract and from the lactating mammary gland into human milk. The physiological role of this protein is in cholesterol and lipid-soluble vitamin ester hydrolysis and absorption. This encoded protein promotes large chylomicron production in the intestine. Also its presence in

## Target Details

plasma suggests its interactions with cholesterol and oxidized lipoproteins to modulate the progression of atherosclerosis. In pancreatic tumoral cells, this encoded protein is thought to be sequestered within the Golgi compartment and is probably not secreted. This gene contains a variable number of tandem repeat (VNTR) polymorphism in the coding region that may influence the function of the encoded protein.

Molecular Weight:	Observed_MW: 71 kDa Calculated_MW: 71 kDa/79 kDa
-------------------	---

Gene ID:	1056
----------	------

UniProt:	<a href="#">P19835</a>
----------	------------------------

Pathways:	<a href="#">Lipid Metabolism</a>
-----------	----------------------------------

## Application Details

Application Notes:	WB 1:500-1:2000
--------------------	-----------------

Restrictions:	For Research Use only
---------------	-----------------------

## Handling

Format:	Liquid
---------	--------

Concentration:	1 mg/mL
----------------	---------

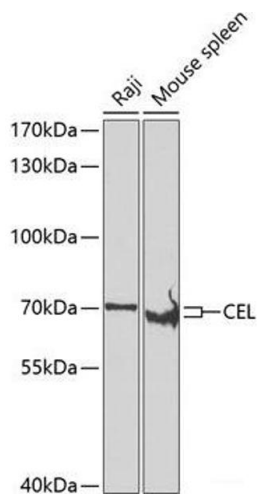
Buffer:	PBS with 0.02 % sodium azide, 50 % glycerol, pH 7.3
---------	---

Preservative:	Sodium azide
---------------	--------------

Precaution of Use:	This product contains Sodium azide: a POISONOUS AND HAZARDOUS SUBSTANCE which should be handled by trained staff only.
--------------------	--

Storage:	-20 °C
----------	--------

Storage Comment:	Store at -20°C. Avoid freeze / thaw cycles.
------------------	---



Western Blotting

**Image 1.** Western blot analysis of extracts of various cell lines using CEL Polyclonal Antibody at dilution of 1:500.