

Datasheet for ABIN7263691

anti-HSPA6 antibody

3 Images

[Go to Product page](#)

Overview

Quantity:	200 µL
Target:	HSPA6
Reactivity:	Human, Mouse, Rat
Host:	Rabbit
Clonality:	Polyclonal
Conjugate:	This HSPA6 antibody is un-conjugated
Application:	Western Blotting (WB), Immunohistochemistry (IHC)

Product Details

Immunogen:	Recombinant fusion protein of human HSPA6 (NP_002146.2).
Isotype:	IgG
Characteristics:	Polyclonal Antibody
Purification:	Affinity purification

Target Details

Target:	HSPA6
Alternative Name:	HSPA6 (HSPA6 Products)
Background:	HSPA6 (Heat Shock Protein Family A (Hsp70) Member 6) is a Protein Coding gene. Diseases associated with HSPA6 include Hepatocellular Carcinoma. Among its related pathways are Cellular response to heat stress and Mechanisms of CFTR activation by S-nitrosoglutathione (normal and CF). Gene Ontology (GO) annotations related to this gene include enzyme binding

Target Details

and heat shock protein binding. An important paralog of this gene is HSPA1A.

Molecular Weight: Observed_MW: 71 kDa
Calculated_MW: 71 kDa

Gene ID: 3310

UniProt: [P17066](#)

Application Details

Application Notes: WB 1:500-1:2000 IHC 1:50-1:200

Restrictions: For Research Use only

Handling

Format: Liquid

Concentration: 1 mg/mL

Buffer: PBS with 0.02 % sodium azide, 50 % glycerol, pH 7.3

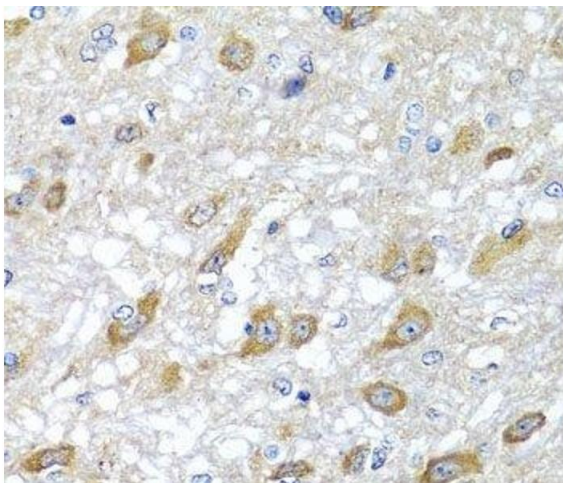
Preservative: Sodium azide

Precaution of Use: This product contains Sodium azide: a POISONOUS AND HAZARDOUS SUBSTANCE which should be handled by trained staff only.

Storage: -20 °C

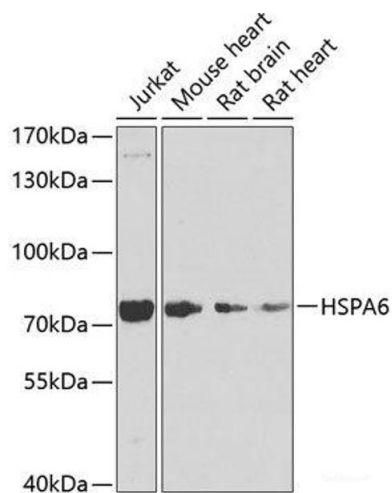
Storage Comment: Store at -20°C. Avoid freeze / thaw cycles.

Images



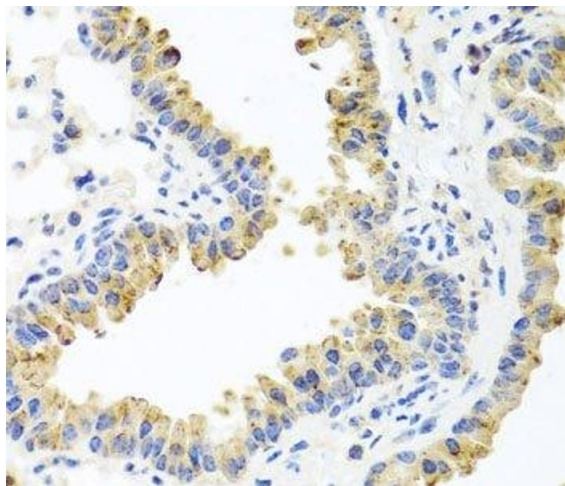
Immunohistochemistry (Paraffin-embedded Sections)

Image 1. Immunohistochemistry of paraffin-embedded Rat brain using HSPA6 Polyclonal Antibody at dilution of 1:100 (40x lens).



Western Blotting

Image 2. Western blot analysis of extracts of various cell lines using HSPA6 Polyclonal Antibody at dilution of 1:1000.



Immunohistochemistry (Paraffin-embedded Sections)

Image 3. Immunohistochemistry of paraffin-embedded Mouse lung using HSPA6 Polyclonal Antibody at dilution of 1:100 (40x lens).