



Datasheet for ABIN7263697

anti-IRF1 antibody



[Go to Product page](#)

4 Images

Overview

Quantity:	200 µL
Target:	IRF1
Reactivity:	Human, Mouse, Rat
Host:	Rabbit
Clonality:	Polyclonal
Conjugate:	This IRF1 antibody is un-conjugated
Application:	Western Blotting (WB), Immunohistochemistry (IHC), Immunofluorescence (IF)

Product Details

Immunogen:	A synthetic peptide of human IRF1
Isotype:	IgG
Characteristics:	Polyclonal Antibody
Purification:	Affinity purification

Target Details

Target:	IRF1
Alternative Name:	IRF1 (IRF1 Products)
Background:	IRF1 encodes interferon regulatory factor 1, a member of the interferon regulatory transcription factor (IRF) family. IRF1 serves as an activator of interferons alpha and beta transcription, and in mouse it has been shown to be required for double-stranded RNA induction of these genes. IRF1 also functions as a transcription activator of genes induced by interferons alpha, beta, and

Target Details

gamma. Further, IRF1 has been shown to play roles in regulating apoptosis and tumor-suppression.

Molecular Weight: Observed_MW: 50 kDa
Calculated_MW: 36 kDa

Gene ID: 3659

UniProt: [P10914](#)

Pathways: [Interferon-gamma Pathway](#), [Response to Growth Hormone Stimulus](#), [Positive Regulation of Immune Effector Process](#), [Hepatitis C](#), [Autophagy](#)

Application Details

Application Notes: WB 1:500-1:2000 IHC 1:50-1:100 IF 1:50-1:100

Restrictions: For Research Use only

Handling

Format: Liquid

Concentration: 1 mg/mL

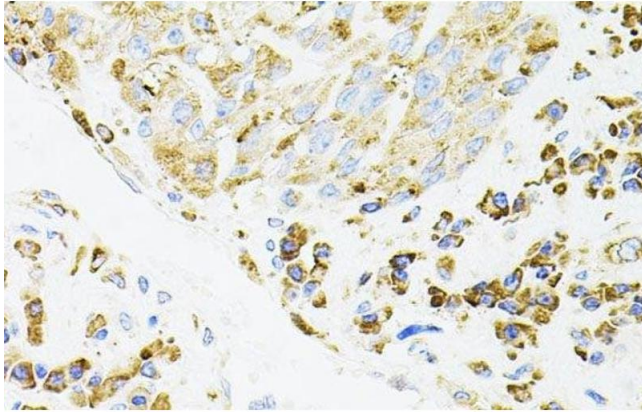
Buffer: PBS with 0.02 % sodium azide, 50 % glycerol, pH 7.3

Preservative: Sodium azide

Precaution of Use: This product contains Sodium azide: a POISONOUS AND HAZARDOUS SUBSTANCE which should be handled by trained staff only.

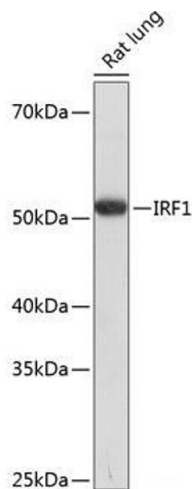
Storage: -20 °C

Storage Comment: Store at -20°C. Avoid freeze / thaw cycles.



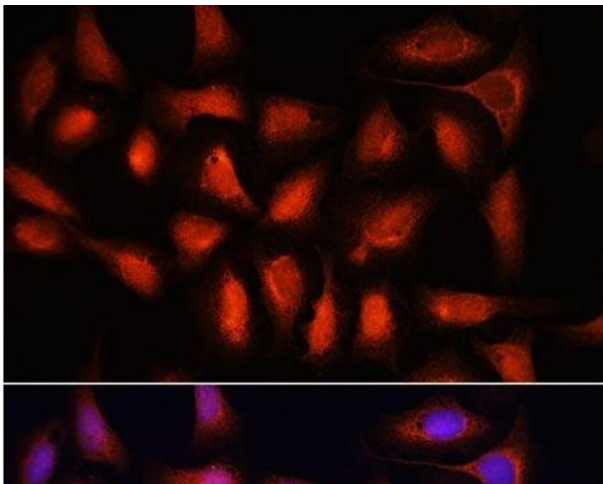
Immunohistochemistry (Paraffin-embedded Sections)

Image 1. Immunohistochemistry of paraffin-embedded Human lung cancer using IRF1 Polyclonal Antibody



Western Blotting

Image 2. Western blot analysis of extracts of Rat lung using IRF1 Polyclonal Antibody at dilution of 1:1000.



Immunofluorescence

Image 3. Immunofluorescence analysis of U-2 OS cells using IRF1 Polyclonal Antibody at dilution of 1:100. Blue: DAPI for nuclear staining.

Please check the [product details page](#) for more images. Overall 4 images are available for ABIN7263697.