



Datasheet for ABIN7263725 anti-Presenilin 2 antibody



[Go to Product page](#)

3 Images

Overview

Quantity:	200 µL
Target:	Presenilin 2 (PSEN2)
Reactivity:	Human, Rat, Mouse
Host:	Rabbit
Clonality:	Polyclonal
Conjugate:	This Presenilin 2 antibody is un-conjugated
Application:	Immunohistochemistry (IHC), Immunofluorescence (IF)

Product Details

Immunogen:	Recombinant protein of human PSEN2.
Isotype:	IgG
Characteristics:	Polyclonal Antibody
Purification:	Affinity purification

Target Details

Target:	Presenilin 2 (PSEN2)
Alternative Name:	PSEN2 (PSEN2 Products)
Background:	Alzheimer's disease (AD) patients with an inherited form of the disease carry mutations in the presenilin proteins (PSEN1 or PSEN2) or the amyloid precursor protein (APP). These disease-linked mutations result in increased production of the longer form of amyloid-beta (main component of amyloid deposits found in AD brains). Presenilins are postulated to regulate APP

Target Details

processing through their effects on gamma-secretase, an enzyme that cleaves APP. Also, it is thought that the presenilins are involved in the cleavage of the Notch receptor such that, they either directly regulate gamma-secretase activity, or themselves act as protease enzymes. Two alternatively spliced transcript variants encoding different isoforms of PSEN2 have been identified.

Gene ID: 5664

UniProt: [P49810](#)

Pathways: [Notch Signaling](#), [EGFR Signaling Pathway](#), [Neurotrophin Signaling Pathway](#)

Application Details

Application Notes: IHC 1:50-1:200 IF 1:50-1:200

Restrictions: For Research Use only

Handling

Format: Liquid

Concentration: 1 mg/mL

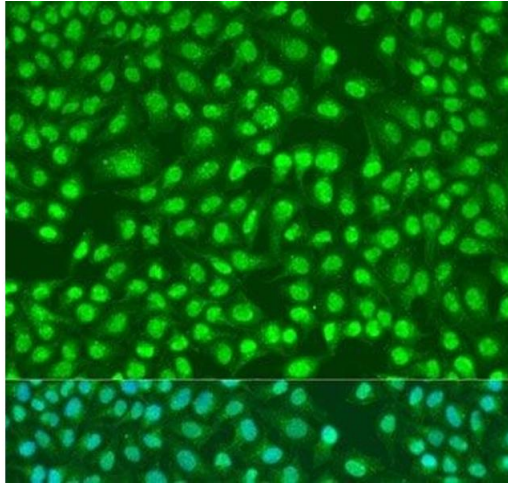
Buffer: PBS with 0.02 % sodium azide, 50 % glycerol, pH 7.3

Preservative: Sodium azide

Precaution of Use: This product contains Sodium azide: a POISONOUS AND HAZARDOUS SUBSTANCE which should be handled by trained staff only.

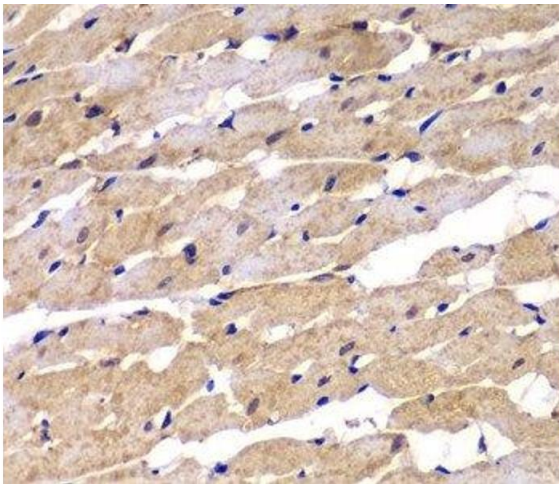
Storage: -20 °C

Storage Comment: Store at -20°C. Avoid freeze / thaw cycles.



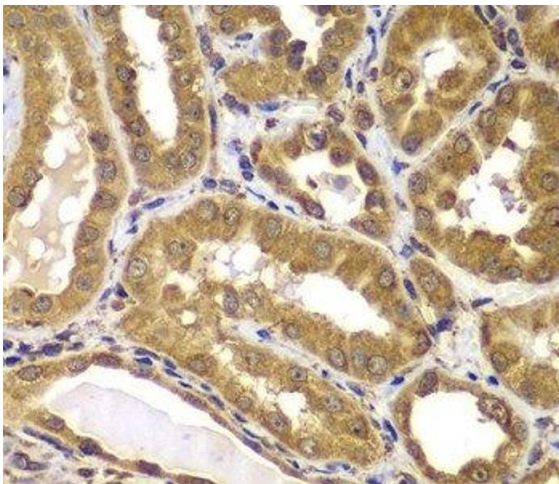
Immunofluorescence

Image 1. Immunofluorescence analysis of U2OS cells using PSEN2 Polyclonal Antibody at dilution of 1:100. Blue: DAPI for nuclear staining.



Immunohistochemistry (Paraffin-embedded Sections)

Image 2. Immunohistochemistry of paraffin-embedded Rat heart using PSEN2 Polyclonal Antibody at dilution of 1:100 (40x lens).



Immunohistochemistry (Paraffin-embedded Sections)

Image 3. Immunohistochemistry of paraffin-embedded Human kidney using PSEN2 Polyclonal Antibody at dilution of 1:100 (40x lens).