

Datasheet for ABIN7263739

**anti-SSX5 antibody****2** Images[Go to Product page](#)

## Overview

Quantity:	200 µL
Target:	SSX5
Reactivity:	Human, Mouse, Rat
Host:	Rabbit
Clonality:	Polyclonal
Conjugate:	This SSX5 antibody is un-conjugated
Application:	Immunohistochemistry (IHC), Immunofluorescence (IF)

## Product Details

Immunogen:	Recombinant fusion protein of human SSX5 (NP_066295.3).
Isotype:	IgG
Characteristics:	Polyclonal Antibody
Purification:	Affinity purification

## Target Details

Target:	SSX5
Alternative Name:	SSX5 ( <a href="#">SSX5 Products</a> )
Background:	The product of this gene belongs to the family of highly homologous synovial sarcoma X (SSX) breakpoint proteins. These proteins may function as transcriptional repressors. They are also capable of eliciting spontaneous humoral and cellular immune responses in cancer patients, and are potentially useful targets in cancer vaccine-based immunotherapy. While some of the

## Target Details

related SSX genes are involved in t(X,18)(p11.2,q11.2) translocations that are characteristically found in all synovial sarcomas, this gene does not appear to be involved in such translocations. Two transcript variants encoding distinct isoforms have been identified for this gene.

Gene ID: 6758

UniProt: [O60225](#)

## Application Details

Application Notes: IHC 1:50-1:200 IF 1:50-1:100

Restrictions: For Research Use only

## Handling

Format: Liquid

Concentration: 1 mg/mL

Buffer: PBS with 0.02 % sodium azide, 50 % glycerol, pH 7.3

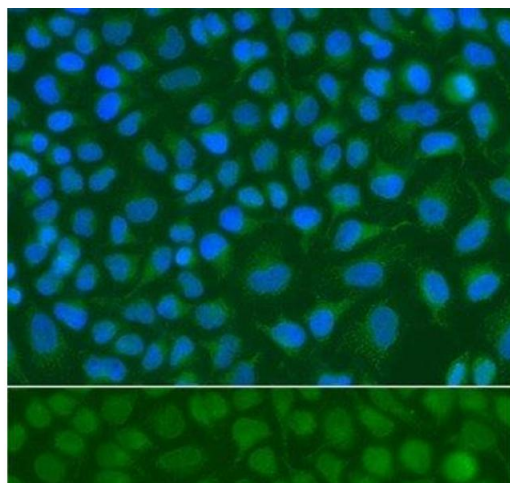
Preservative: Sodium azide

Precaution of Use: This product contains Sodium azide: a POISONOUS AND HAZARDOUS SUBSTANCE which should be handled by trained staff only.

Storage: -20 °C

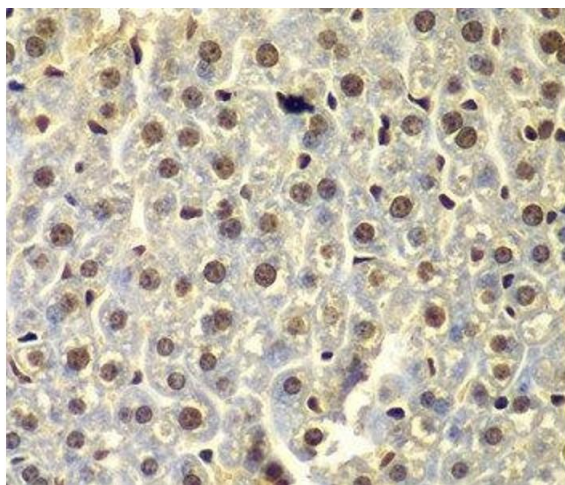
Storage Comment: Store at -20°C. Avoid freeze / thaw cycles.

## Images



### Immunofluorescence

**Image 1.** Immunofluorescence analysis of A549 cells using SSX5 Polyclonal Antibody



#### Immunohistochemistry (Paraffin-embedded Sections)

**Image 2.** Immunohistochemistry of paraffin-embedded Mouse liver using SSX5 Polyclonal Antibody at dilution of 1:100 (40x lens).