

Datasheet for ABIN7263773

**anti-ADAM15 antibody**[Go to Product page](#)**2** Images

## Overview

Quantity:	200 µL
Target:	ADAM15
Reactivity:	Human, Mouse, Rat
Host:	Rabbit
Clonality:	Polyclonal
Conjugate:	This ADAM15 antibody is un-conjugated
Application:	Western Blotting (WB), Immunofluorescence (IF)

## Product Details

Immunogen:	Recombinant protein of human ADAM15
Isotype:	IgG
Characteristics:	Polyclonal Antibody
Purification:	Affinity purification

## Target Details

Target:	ADAM15
Alternative Name:	ADAM15 ( <a href="#">ADAM15 Products</a> )
Background:	The protein encoded by this gene is a member of the ADAM (a disintegrin and metalloproteinase) protein family. ADAM family members are type I transmembrane glycoproteins known to be involved in cell adhesion and proteolytic ectodomain processing of cytokines and adhesion molecules. This protein contains multiple functional domains including

## Target Details

a zinc-binding metalloprotease domain, a disintegrin-like domain, as well as a EGF-like domain. Through its disintegrin-like domain, this protein specifically interacts with the integrin beta chain, beta 3. It also interacts with Src family protein-tyrosine kinases in a phosphorylation-dependent manner, suggesting that this protein may function in cell-cell adhesion as well as in cellular signaling. Multiple alternatively spliced transcript variants encoding distinct isoforms have been observed.

Molecular Weight:	Observed_MW: 93 kDa Calculated_MW: 55 kDa/68 kDa/83-92 kDa
-------------------	---

Gene ID:	8751
----------	------

UniProt:	<a href="#">Q13444</a>
----------	------------------------

## Application Details

Application Notes:	WB 1:500-1:2000 IF 1:50-1:200
--------------------	-------------------------------

Restrictions:	For Research Use only
---------------	-----------------------

## Handling

Format:	Liquid
---------	--------

Concentration:	1 mg/mL
----------------	---------

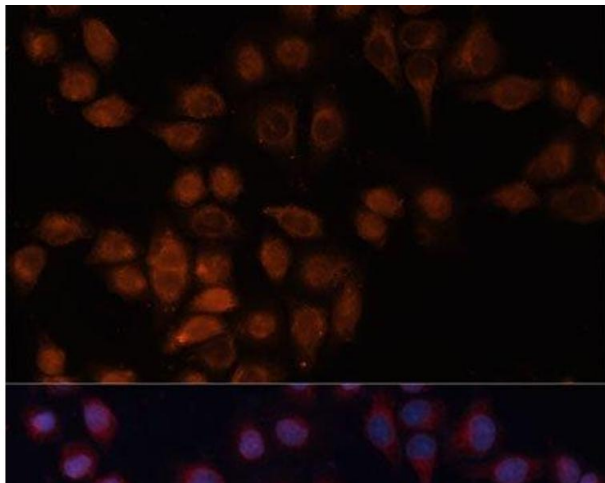
Buffer:	PBS with 0.02 % sodium azide, 50 % glycerol, pH 7.3
---------	---

Preservative:	Sodium azide
---------------	--------------

Precaution of Use:	This product contains Sodium azide: a POISONOUS AND HAZARDOUS SUBSTANCE which should be handled by trained staff only.
--------------------	--

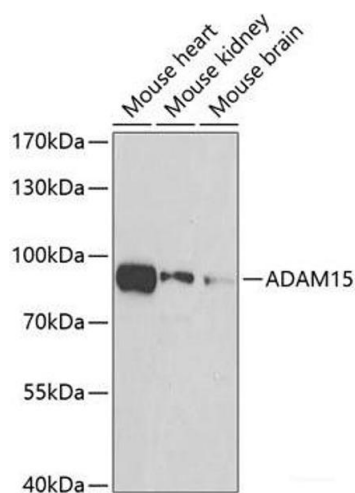
Storage:	-20 °C
----------	--------

Storage Comment:	Store at -20°C. Avoid freeze / thaw cycles.
------------------	---



### Immunofluorescence

**Image 1.** Immunofluorescence analysis of HeLa cells using ADAM15 Polyclonal Antibody at dilution of 1:100 (40x lens). Blue: DAPI for nuclear staining.



### Western Blotting

**Image 2.** Western blot analysis of extracts of various cell lines using ADAM15 Polyclonal Antibody at dilution of 1:500.