

Datasheet for ABIN7263789

anti-ZFYVE16 antibody[Go to Product page](#)**1** Image

Overview

Quantity:	200 µL
Target:	ZFYVE16
Reactivity:	Human, Mouse
Host:	Rabbit
Clonality:	Polyclonal
Conjugate:	This ZFYVE16 antibody is un-conjugated
Application:	Immunofluorescence (IF)

Product Details

Immunogen:	Recombinant fusion protein of human ZFYVE16 (NP_055548.3).
Isotype:	IgG
Characteristics:	Polyclonal Antibody
Purification:	Affinity purification

Target Details

Target:	ZFYVE16
Alternative Name:	ZFYVE16 (ZFYVE16 Products)
Background:	<p>This gene encodes an endosomal protein that belongs to the FYVE zinc finger family of proteins. The encoded protein is thought to regulate membrane trafficking in the endosome.</p> <p>This protein functions as a scaffold protein in the transforming growth factor-beta signaling pathway and is involved in positive and negative feedback regulation of the bone</p>

Target Details

	morphogenetic protein signaling pathway. Alternate splicing results in multiple transcript variants.
Gene ID:	9765
UniProt:	Q7Z3T8

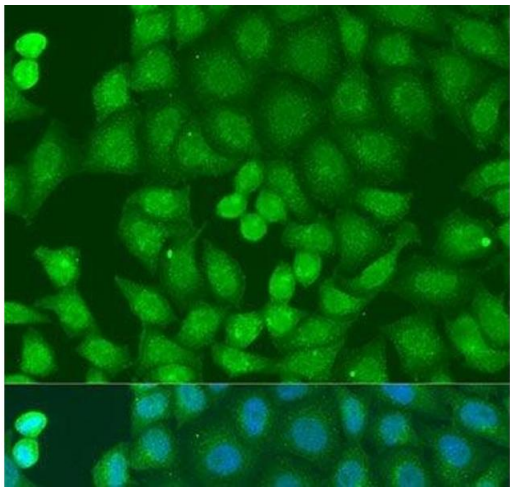
Application Details

Application Notes:	IF 1:50-1:200
Restrictions:	For Research Use only

Handling

Format:	Liquid
Concentration:	1 mg/mL
Buffer:	PBS with 0.02 % sodium azide, 50 % glycerol, pH 7.3
Preservative:	Sodium azide
Precaution of Use:	This product contains Sodium azide: a POISONOUS AND HAZARDOUS SUBSTANCE which should be handled by trained staff only.
Storage:	-20 °C
Storage Comment:	Store at -20°C. Avoid freeze / thaw cycles.

Images



Immunofluorescence

Image 1. Immunofluorescence analysis of U2OS cells using ZFYVE16 Polyclonal Antibody at dilution of 1:100. Blue: DAPI for nuclear staining.