



[Go to Product page](#)

Datasheet for ABIN7263799

## anti-CKAP4 antibody

### 4 Images

#### Overview

Quantity:	200 µL
Target:	CKAP4
Reactivity:	Human, Mouse, Rat
Host:	Rabbit
Clonality:	Polyclonal
Conjugate:	This CKAP4 antibody is un-conjugated
Application:	Immunohistochemistry (IHC), Immunofluorescence (IF)

#### Product Details

Immunogen:	A synthetic peptide of human CKAP4
Isotype:	IgG
Characteristics:	Polyclonal Antibody
Purification:	Affinity purification

#### Target Details

Target:	CKAP4
Alternative Name:	CKAP4 ( <a href="#">CKAP4 Products</a> )
Background:	CKAP4 (cytoskeleton-associated protein 4), also known as p63, CLIMP-63 or ERGIC-63, is a 602 amino acid single-pass type II transmembrane protein that links the endoplasmic reticulum (ER) to the cytoskeleton. Considered a novel protein in maintaining ER morphology, CKAP4 anchors the ER to microtubules which is required for maintaining ER spatial distribution during

## Target Details

interphase of the cell cycle. CKAP4 can be reversibly palmitoylated and phosphorylated and is a major substrate of the palmitoyl acyltransferase, ZDHHC2.

Gene ID: 10970

UniProt: [Q07065](#)

## Application Details

Application Notes: IHC 1:50-1:100 IF 1:50-1:100

Restrictions: For Research Use only

## Handling

Format: Liquid

Concentration: 1 mg/mL

Buffer: PBS with 0.02 % sodium azide, 50 % glycerol, pH 7.3

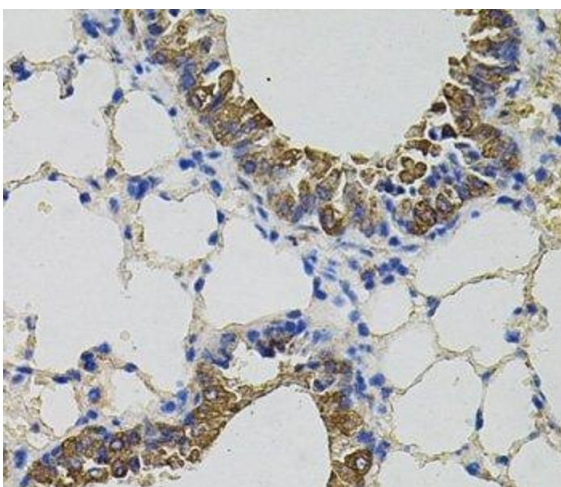
Preservative: Sodium azide

Precaution of Use: This product contains Sodium azide: a POISONOUS AND HAZARDOUS SUBSTANCE which should be handled by trained staff only.

Storage: -20 °C

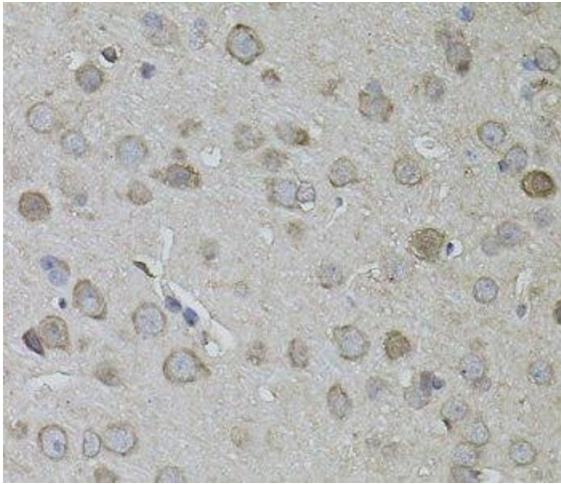
Storage Comment: Store at -20°C. Avoid freeze / thaw cycles.

## Images



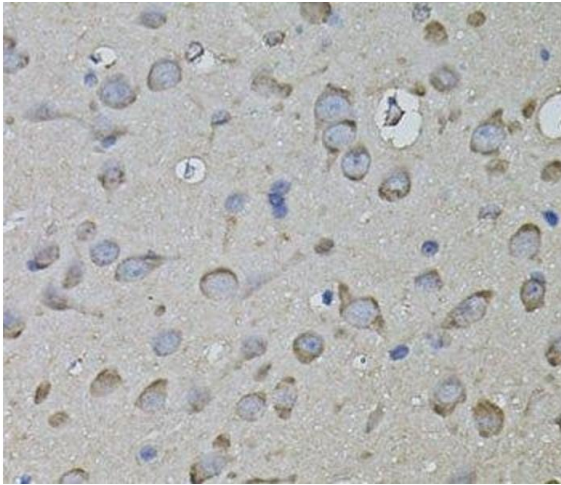
### Immunohistochemistry (Paraffin-embedded Sections)

**Image 1.** Immunohistochemistry of paraffin-embedded Mouse lung using CKAP4 Polyclonal Antibody



**Immunohistochemistry (Paraffin-embedded Sections)**

**Image 2.** Immunohistochemistry of paraffin-embedded Mouse brain using CKAP4 Polyclonal Antibody



**Immunohistochemistry (Paraffin-embedded Sections)**

**Image 3.** Immunohistochemistry of paraffin-embedded Rat brain using CKAP4 Polyclonal Antibody

Please check the [product details page](#) for more images. Overall 4 images are available for ABIN7263799.