



## Datasheet for ABIN7263801 anti-PACSIN2 antibody



[Go to Product page](#)

### 1 Image

#### Overview

Quantity:	200 µL
Target:	PACSIN2
Reactivity:	Human, Mouse
Host:	Rabbit
Clonality:	Polyclonal
Conjugate:	This PACSIN2 antibody is un-conjugated
Application:	Western Blotting (WB)

#### Product Details

Immunogen:	Recombinant fusion protein of human PACSIN2 (NP_009160.2).
Isotype:	IgG
Characteristics:	Polyclonal Antibody
Purification:	Affinity purification

#### Target Details

Target:	PACSIN2
Alternative Name:	PACSIN2 ( <a href="#">PACSIN2 Products</a> )
Background:	This gene is a member of the protein kinase C and casein kinase substrate in neurons family. The encoded protein is involved in linking the actin cytoskeleton with vesicle formation by regulating tubulin polymerization. Alternative splicing results in multiple transcript variants.

## Target Details

Molecular Weight: Observed\_MW: 56 kDa  
Calculated\_MW: 51 kDa/55 kDa

Gene ID: 11252

UniProt: [Q9UNF0](#)

## Application Details

Application Notes: WB 1:500-1:2000

Restrictions: For Research Use only

## Handling

Format: Liquid

Concentration: 1 mg/mL

Buffer: PBS with 0.02 % sodium azide, 50 % glycerol, pH 7.3

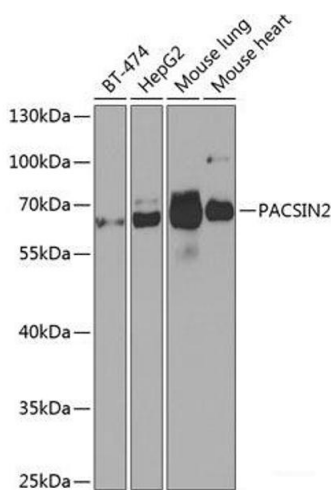
Preservative: Sodium azide

Precaution of Use: This product contains Sodium azide: a POISONOUS AND HAZARDOUS SUBSTANCE which should be handled by trained staff only.

Storage: -20 °C

Storage Comment: Store at -20°C. Avoid freeze / thaw cycles.

## Images



### Western Blotting

**Image 1.** Western blot analysis of extracts of various cell lines using PACSIN2 Polyclonal Antibody at dilution of 1:1000.