



[Go to Product page](#)

Datasheet for ABIN7263813 **anti-GABARAPL1 antibody**

1 Image

Overview

Quantity:	200 µL
Target:	GABARAPL1
Reactivity:	Human, Rat, Mouse
Host:	Rabbit
Clonality:	Polyclonal
Conjugate:	This GABARAPL1 antibody is un-conjugated
Application:	Western Blotting (WB)

Product Details

Immunogen:	Recombinant fusion protein of human GABARAPL1 (NP_113600.1).
Isotype:	IgG
Characteristics:	Polyclonal Antibody
Purification:	Affinity purification

Target Details

Target:	GABARAPL1
Alternative Name:	GABARAPL1 (GABARAPL1 Products)
Background:	GABARAPL1 (GABA Type A Receptor Associated Protein Like 1) is a Protein Coding gene. Diseases associated with GABARAPL1 include Alzheimer Disease 13 and Vici Syndrome. Among its related pathways are Macroautophagy and Apelin signaling pathway. Gene Ontology (GO) annotations related to this gene include microtubule binding and GABA receptor binding.

Target Details

An important paralog of this gene is GABARAP.

Molecular Weight: Observed_MW: 16 kDa
Calculated_MW: 14 kDa/17 kDa

Gene ID: 23710

UniProt: [Q9H0R8](#)

Pathways: [Autophagy](#)

Application Details

Application Notes: WB 1:500-1:2000

Restrictions: For Research Use only

Handling

Format: Liquid

Concentration: 1 mg/mL

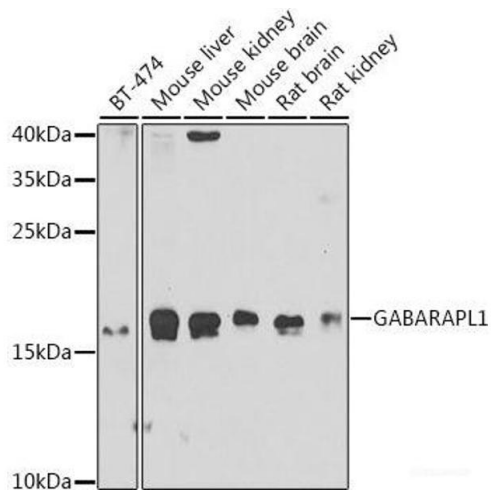
Buffer: PBS with 0.02 % sodium azide, 50 % glycerol, pH 7.3

Preservative: Sodium azide

Precaution of Use: This product contains Sodium azide: a POISONOUS AND HAZARDOUS SUBSTANCE which should be handled by trained staff only.

Storage: -20 °C

Storage Comment: Store at -20°C. Avoid freeze / thaw cycles.



Western Blotting

Image 1. Western blot analysis of extracts of various cell lines using GABARAPL1 Polyclonal Antibody at dilution of 1:1000.