



[Go to Product page](#)

Datasheet for ABIN7263875
anti-PHF21B antibody

3 Images

Overview

Quantity:	200 µL
Target:	PHF21B
Reactivity:	Human, Mouse, Rat
Host:	Rabbit
Clonality:	Polyclonal
Conjugate:	This PHF21B antibody is un-conjugated
Application:	Western Blotting (WB), Immunohistochemistry (IHC), Immunofluorescence (IF)

Product Details

Immunogen:	Recombinant fusion protein of human PHF21B (NP_612424.1).
Isotype:	IgG
Characteristics:	Polyclonal Antibody
Purification:	Affinity purification

Target Details

Target:	PHF21B
Alternative Name:	PHF21B (PHF21B Products)
Background:	PHF21B (PHD Finger Protein 21B) is a Protein Coding gene. An important paralog of this gene is PHF21A.
Molecular Weight:	Observed_MW: 50 kDa

Target Details

Calculated_MW: 51 kDa/53 kDa/57 kDa

Gene ID: 112885

UniProt: [Q96EK2](#)

Application Details

Application Notes: WB 1:500-1:2000 IHC 1:50-1:200 IF 1:50-1:200

Restrictions: For Research Use only

Handling

Format: Liquid

Concentration: 1 mg/mL

Buffer: PBS with 0.02 % sodium azide, 50 % glycerol, pH 7.3

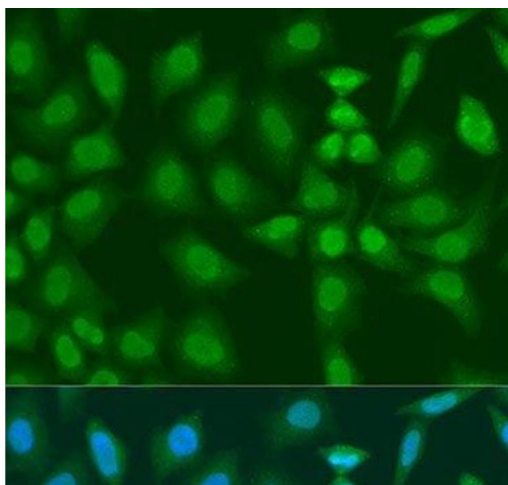
Preservative: Sodium azide

Precaution of Use: This product contains Sodium azide: a POISONOUS AND HAZARDOUS SUBSTANCE which should be handled by trained staff only.

Storage: -20 °C

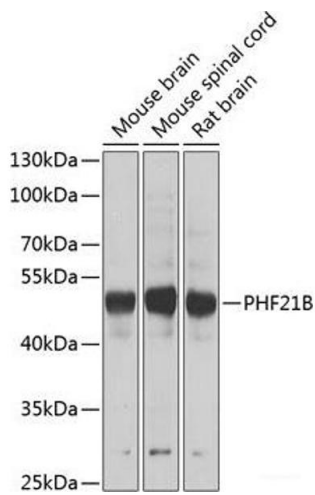
Storage Comment: Store at -20°C. Avoid freeze / thaw cycles.

Images



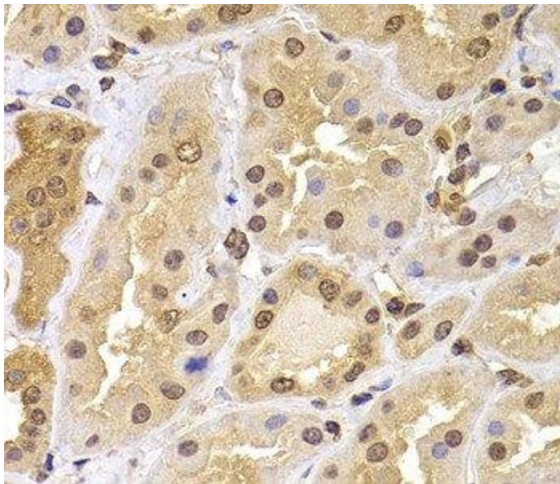
Immunofluorescence

Image 1. Immunofluorescence analysis of U2OS cells using PHF21B Polyclonal Antibody at dilution of 1:100. Blue: DAPI for nuclear staining.



Western Blotting

Image 2. Western blot analysis of extracts of various cell lines using PHF21B Polyclonal Antibody at dilution of 1:1000.



Immunohistochemistry (Paraffin-embedded Sections)

Image 3. Immunohistochemistry of paraffin-embedded Human kidney using PHF21B Polyclonal Antibody at dilution of 1:100 (40x lens).