

Datasheet for ABIN7263933

anti-GTF2I antibody

7 Images

[Go to Product page](#)

Overview

Quantity:	200 µL
Target:	GTF2I
Reactivity:	Human, Mouse, Rat
Host:	Rabbit
Clonality:	Polyclonal
Conjugate:	This GTF2I antibody is un-conjugated
Application:	Western Blotting (WB), Immunohistochemistry (IHC), Immunofluorescence (IF)

Product Details

Immunogen:	A synthetic peptide of human GTF2I
Isotype:	IgG
Characteristics:	Polyclonal Antibody
Purification:	Affinity purification

Target Details

Target:	GTF2I
Alternative Name:	GTF2I (GTF2I Products)
Background:	This gene encodes a phosphoprotein containing six characteristic repeat motifs. The encoded protein binds to the initiator element (Inr) and E-box element in promoters and functions as a regulator of transcription. This locus, along with several other neighboring genes, is deleted in Williams-Beuren syndrome. There are many closely related genes and pseudogenes for this

Target Details

gene on chromosome 7. This gene also has pseudogenes on chromosomes 9, 13, and 21. Alternatively spliced transcript variants encoding multiple isoforms have been observed.

Molecular Weight: Observed_MW: 132 kDa
Calculated_MW: 30 kDa/107 kDa/110 kDa/112 kDa

Gene ID: 2969

UniProt: [P78347](#)

Application Details

Application Notes: WB 1:500-1:2000 IHC 1:100-1:200 IF 1:50-1:200

Restrictions: For Research Use only

Handling

Format: Liquid

Concentration: 1 mg/mL

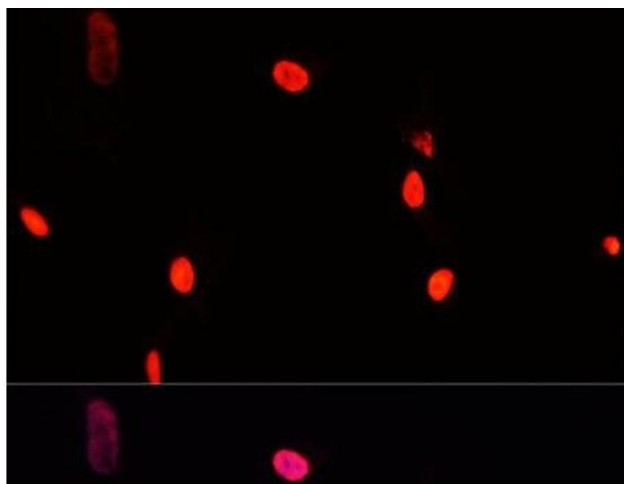
Buffer: PBS with 0.02 % sodium azide, 50 % glycerol, pH 7.3

Preservative: Sodium azide

Precaution of Use: This product contains Sodium azide: a POISONOUS AND HAZARDOUS SUBSTANCE which should be handled by trained staff only.

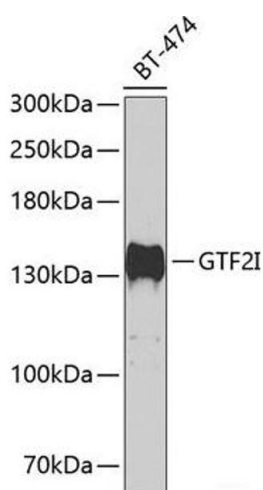
Storage: -20 °C

Storage Comment: Store at -20°C. Avoid freeze / thaw cycles.



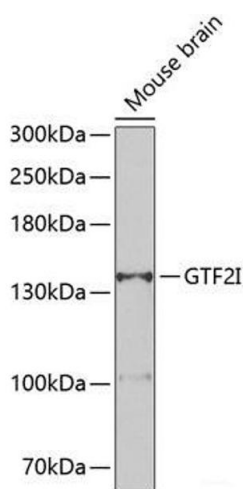
Immunofluorescence

Image 1. Immunofluorescence analysis of A431 cells using GTF2I Polyclonal Antibody at dilution of 1:100. Blue: DAPI for nuclear staining.



Western Blotting

Image 2. Western blot analysis of extracts of BT-474 cells using GTF2I Polyclonal Antibody at dilution of 1:500.



Western Blotting

Image 3. Western blot analysis of extracts of Mouse brain using GTF2I Polyclonal Antibody at dilution of 1:500.

Please check the [product details page](#) for more images. Overall 7 images are available for ABIN7263933.