

Datasheet for ABIN7263939

anti-HSPA2 antibody**2** Images[Go to Product page](#)

Overview

Quantity:	200 µL
Target:	HSPA2
Reactivity:	Human, Rat, Mouse
Host:	Rabbit
Clonality:	Polyclonal
Conjugate:	This HSPA2 antibody is un-conjugated
Application:	Immunofluorescence (IF)

Product Details

Immunogen:	Recombinant fusion protein of human HSPA2 (NP_068814.2).
Isotype:	IgG
Characteristics:	Polyclonal Antibody
Purification:	Affinity purification

Target Details

Target:	HSPA2
Alternative Name:	HSPA2 (HSPA2 Products)
Background:	Human HSPA2 is a member of the HSPA (HSP70) family of heat-shock proteins, encoded by the gene originally described as testis-specific. Recently, it has been reported that HSPA2 can be also expressed in human somatic tissues in a cell-type specific manner. HSPA2 is a cytosol/nuclear protein able to translocate between cytoplasm and nucleus. HSPA2 is involved

Target Details

in sperm maturity,function and fertility. Aberrant expression of HSPA2 in testes has been connected with male infertility. Recently,HSPA2 has attracted increased interest due to its possible involvement in carcinogenesis of non-testicular tissues. This antibody well recognized the endogenous HSPA4 protein in testis and multiple cell lines. (21373891)

Gene ID: 3306

UniProt: [P54652](#)

Application Details

Application Notes: IF 1:50-1:200

Restrictions: For Research Use only

Handling

Format: Liquid

Concentration: 1 mg/mL

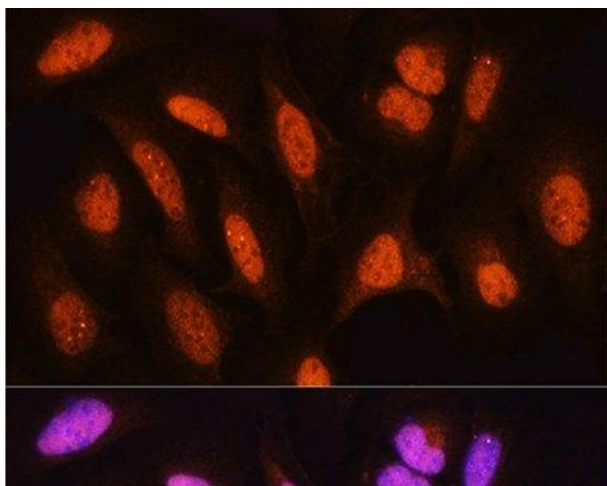
Buffer: PBS with 0.02 % sodium azide, 50 % glycerol, pH 7.3

Preservative: Sodium azide

Precaution of Use: This product contains Sodium azide: a POISONOUS AND HAZARDOUS SUBSTANCE which should be handled by trained staff only.

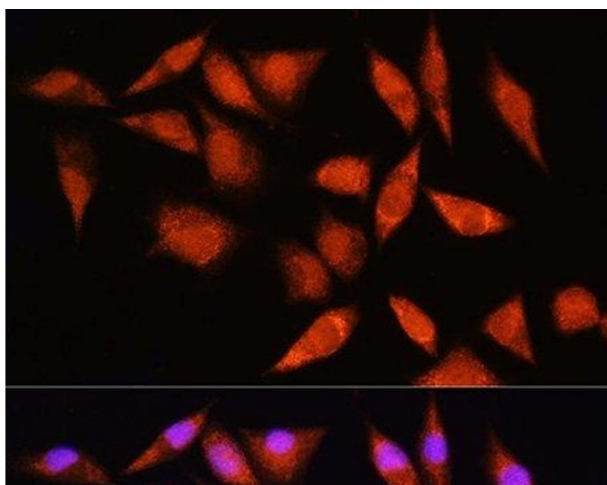
Storage: -20 °C

Storage Comment: Store at -20°C. Avoid freeze / thaw cycles.



Immunofluorescence

Image 1. Immunofluorescence analysis of U2OS cells using HSPA2 Polyclonal Antibody at dilution of 1:100. Blue: DAPI for nuclear staining.



Immunofluorescence

Image 2. Immunofluorescence analysis of L929 cells using HSPA2 Polyclonal Antibody at dilution of 1:100. Blue: DAPI for nuclear staining.