



[Go to Product page](#)

Datasheet for ABIN7263955

anti-CD56 antibody

3 Images

Overview

| | |
|--------------|--|
| Quantity: | 200 µL |
| Target: | CD56 (NCAM1) |
| Reactivity: | Human, Mouse, Rat |
| Host: | Rabbit |
| Clonality: | Polyclonal |
| Conjugate: | This CD56 antibody is un-conjugated |
| Application: | Western Blotting (WB), Immunofluorescence (IF), Immunohistochemistry (IHC) |

Product Details

| | |
|------------------|---|
| Immunogen: | Recombinant fusion protein of human NCAM1 / CD56 (NP_851996.2). |
| Isotype: | IgG |
| Characteristics: | Polyclonal Antibody |
| Purification: | Affinity purification |

Target Details

| | |
|-------------------|--|
| Target: | CD56 (NCAM1) |
| Alternative Name: | NCAM1 / CD56 (NCAM1 Products) |
| Background: | This gene encodes a cell adhesion protein which is a member of the immunoglobulin superfamily. The encoded protein is involved in cell-to-cell interactions as well as cell-matrix interactions during development and differentiation. The encoded protein has been shown to be involved in development of the nervous system, and for cells involved in the expansion of T |

Target Details

cells and dendritic cells which play an important role in immune surveillance. Alternative splicing results in multiple transcript variants.

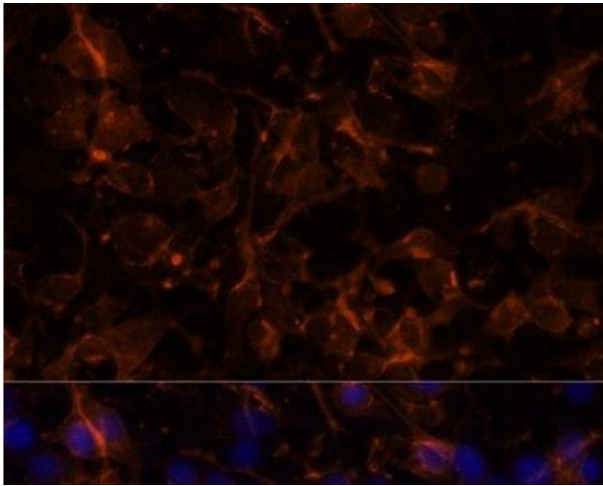
| | |
|-------------------|--|
| Molecular Weight: | Observed_MW: 160 kDa Calculated_MW: 40 kDa/73 kDa/80 kDa/83 kDa/93 kDa/94 kDa |
| Gene ID: | 4684 |
| UniProt: | P13591 |

Application Details

| | |
|--------------------|---|
| Application Notes: | WB 1:500-1:2000 IHC 1:100-1:200 IF 1:50-1:200 |
| Restrictions: | For Research Use only |

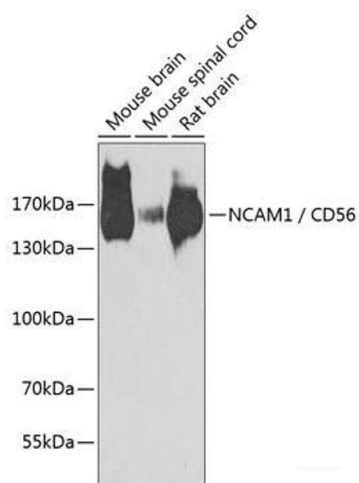
Handling

| | |
|--------------------|--|
| Format: | Liquid |
| Concentration: | 1 mg/mL |
| Buffer: | PBS with 0.02 % sodium azide, 50 % glycerol, pH 7.3 |
| Preservative: | Sodium azide |
| Precaution of Use: | This product contains Sodium azide: a POISONOUS AND HAZARDOUS SUBSTANCE which should be handled by trained staff only. |
| Storage: | -20 °C |
| Storage Comment: | Store at -20°C. Avoid freeze / thaw cycles. |



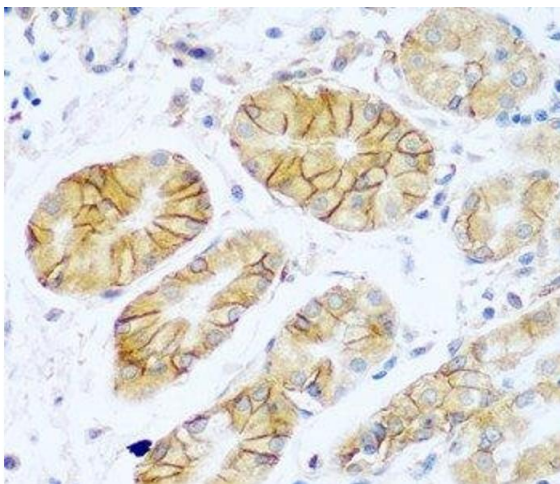
Immunofluorescence

Image 1. Immunofluorescence analysis of C6 cells using NCAM1 / CD56 Polyclonal Antibody at dilution of 1:100. Blue: DAPI for nuclear staining.



Western Blotting

Image 2. Western blot analysis of extracts of various cell lines using NCAM1 / CD56 Polyclonal Antibody at dilution of 1:1000.



Immunohistochemistry (Paraffin-embedded Sections)

Image 3. Immunohistochemistry of paraffin-embedded Human stomach using NCAM1 / CD56 Polyclonal Antibody at dilution of 1:100 (40x lens).