

Datasheet for ABIN7263975

**anti-SAFB antibody**

## 7 Images

[Go to Product page](#)

## Overview

|              |  |
|--------------|--|
| Quantity:    | 200 µL   |
| Target:      | SAFB   |
| Reactivity:  | Human, Mouse, Rat  |
| Host:        | Rabbit   |
| Clonality:   | Polyclonal   |
| Conjugate:   | This SAFB antibody is un-conjugated  |
| Application: | Western Blotting (WB), Immunofluorescence (IF), Immunohistochemistry (IHC) |

## Product Details

|                  |  |
|------------------|--|
| Immunogen:       | Recombinant fusion protein of human SAFB (NP_001188267.1). |
| Isotype:         | IgG  |
| Characteristics: | Polyclonal Antibody  |
| Purification:    | Affinity purification                                      |

## Target Details

|                   |  |
|-------------------|--|
| Target:           | SAFB   |
| Alternative Name: | SAFB ( <a href="#">SAFB Products</a> )   |
| Background:       | This gene encodes a DNA-binding protein which has high specificity for scaffold or matrix attachment region DNA elements (S/MAR DNA). This protein is thought to be involved in attaching the base of chromatin loops to the nuclear matrix but there is conflicting evidence as to whether this protein is a component of chromatin or a nuclear matrix protein. Scaffold |

## Target Details

attachment factors are a specific subset of nuclear matrix proteins (NMP) that specifically bind to S/MAR. The encoded protein is thought to serve as a molecular base to assemble a 'transcriptosome complex' in the vicinity of actively transcribed genes. It is involved in the regulation of heat shock protein 27 transcription, can act as an estrogen receptor co-repressor and is a candidate for breast tumorigenesis. This gene is arranged head-to-head with a similar gene whose product has the same functions. Multiple transcript variants encoding different isoforms have been found for this gene.

Molecular Weight: Observed\_MW: 155 kDa  
Calculated\_MW: 95 kDa/102 kDa

Gene ID: 6294

UniProt: [Q15424](#)

Pathways: [Intracellular Steroid Hormone Receptor Signaling Pathway](#)

## Application Details

Application Notes: WB 1:500-1:2000 IHC 1:50-1:200 IF 1:50-1:200

Restrictions: For Research Use only

## Handling

Format: Liquid

Concentration: 1 mg/mL

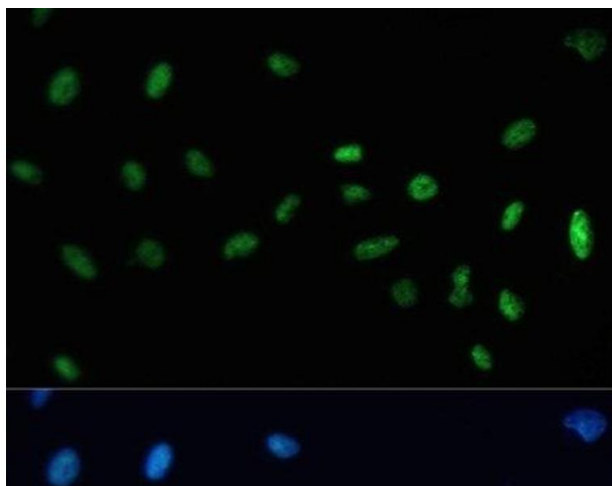
Buffer: PBS with 0.02 % sodium azide, 50 % glycerol, pH 7.3

Preservative: Sodium azide

Precaution of Use: This product contains Sodium azide: a POISONOUS AND HAZARDOUS SUBSTANCE which should be handled by trained staff only.

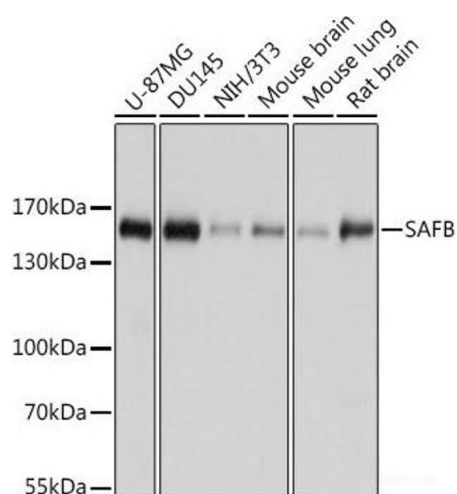
Storage: -20 °C

Storage Comment: Store at -20°C. Avoid freeze / thaw cycles.



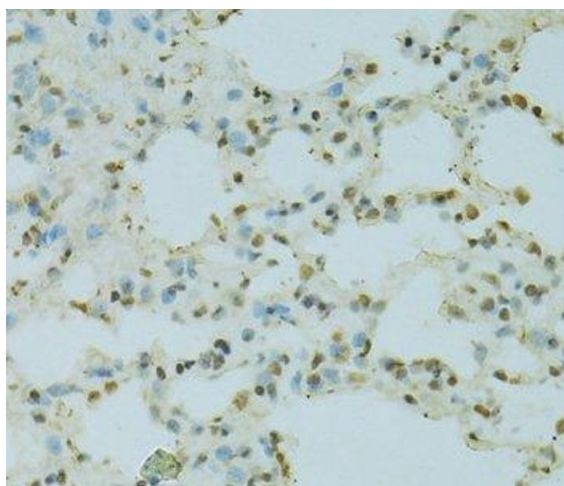
#### Immunofluorescence

**Image 1.** Immunofluorescence analysis of U-2 OS cells using SAFB Polyclonal Antibody at dilution of 1:100. Blue: DAPI for nuclear staining.



#### Western Blotting

**Image 2.** Western blot analysis of extracts of various cell lines using SAFB Polyclonal Antibody at dilution of 1:1000.



#### Immunohistochemistry (Paraffin-embedded Sections)

**Image 3.** Immunohistochemistry of paraffin-embedded Rat lung using SAFB Polyclonal Antibody at dilution of 1:100 (40x lens).

Please check the [product details page](#) for more images. Overall 7 images are available for ABIN7263975.