

Datasheet for ABIN7263979
anti-Aurora Kinase C antibody

3 Images

[Go to Product page](#)

Overview

Quantity:	200 µL
Target:	Aurora Kinase C (AURKC)
Reactivity:	Human, Mouse, Rat
Host:	Rabbit
Clonality:	Polyclonal
Conjugate:	This Aurora Kinase C antibody is un-conjugated
Application:	Western Blotting (WB), Immunohistochemistry (IHC)

Product Details

Immunogen:	A synthetic peptide of human AURKC
Isotype:	IgG
Characteristics:	Polyclonal Antibody
Purification:	Affinity purification

Target Details

Target:	Aurora Kinase C (AURKC)
Alternative Name:	AURKC (AURKC Products)
Background:	This gene encodes a member of the Aurora subfamily of serine/threonine protein kinases. The encoded protein is a chromosomal passenger protein that forms complexes with Aurora-B and inner centromere proteins and may play a role in organizing microtubules in relation to centrosome/spindle function during mitosis. This gene is overexpressed in several cancer cell

Target Details

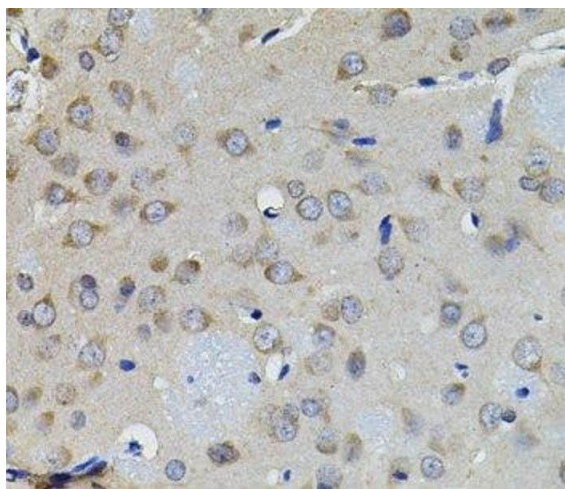
	lines, suggesting an involvement in oncogenic signal transduction. Alternative splicing results in multiple transcript variants.
Molecular Weight:	Observed_MW: 36 kDa Calculated_MW: 32 kDa/33 kDa/35 kDa
Gene ID:	6795
UniProt:	Q9UQB9
Pathways:	Cell Division Cycle , Maintenance of Protein Location

Application Details

Application Notes:	WB 1:500-1:2000 IHC 1:50-1:100
Restrictions:	For Research Use only

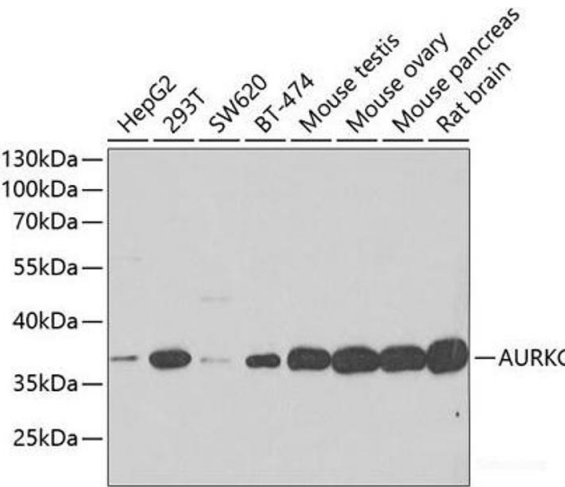
Handling

Format:	Liquid
Concentration:	1 mg/mL
Buffer:	PBS with 0.02 % sodium azide, 50 % glycerol, pH 7.3
Preservative:	Sodium azide
Precaution of Use:	This product contains Sodium azide: a POISONOUS AND HAZARDOUS SUBSTANCE which should be handled by trained staff only.
Storage:	-20 °C
Storage Comment:	Store at -20°C. Avoid freeze / thaw cycles.



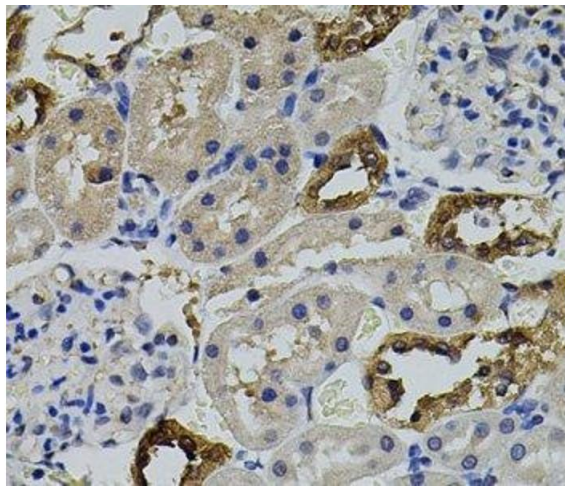
Immunohistochemistry (Paraffin-embedded Sections)

Image 1. Immunohistochemistry of paraffin-embedded Rat brain using AURKC Polyclonal Antibody



Western Blotting

Image 2. Western blot analysis of extracts of various cell lines using AURKC Polyclonal Antibody at dilution of 1:500.



Immunohistochemistry (Paraffin-embedded Sections)

Image 3. Immunohistochemistry of paraffin-embedded Rat kidney using AURKC Polyclonal Antibody