



[Go to Product page](#)

Datasheet for ABIN7264063  
**anti-MSRB3 antibody**

2 Images

Overview

Quantity:	200 µL
Target:	MSRB3
Reactivity:	Human, Mouse, Rat
Host:	Rabbit
Clonality:	Polyclonal
Conjugate:	This MSRB3 antibody is un-conjugated
Application:	Western Blotting (WB), Immunofluorescence (IF)

Product Details

Immunogen:	Recombinant fusion protein of human MSRB3 (NP_001026849.1).
Isotype:	IgG
Characteristics:	Polyclonal Antibody
Purification:	Affinity purification

Target Details

Target:	MSRB3
Alternative Name:	MSRB3 ( <a href="#">MSRB3 Products</a> )
Background:	The protein encoded by this gene catalyzes the reduction of methionine sulfoxide to methionine. This enzyme acts as a monomer and requires zinc as a cofactor. Several transcript variants encoding two different isoforms have been found for this gene. One of the isoforms localizes to mitochondria while the other localizes to endoplasmic reticula.

## Target Details

Molecular Weight: Observed\_MW: 25 kDa  
Calculated\_MW: 20 kDa

Gene ID: 253827

UniProt: [Q8IXL7](#)

## Application Details

Application Notes: WB 1:500-1:2000 IF 1:50-1:200

Restrictions: For Research Use only

## Handling

Format: Liquid

Concentration: 1 mg/mL

Buffer: PBS with 0.02 % sodium azide, 50 % glycerol, pH 7.3

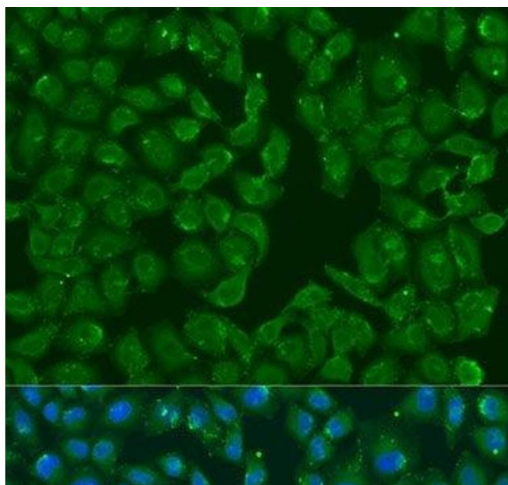
Preservative: Sodium azide

Precaution of Use: This product contains Sodium azide: a POISONOUS AND HAZARDOUS SUBSTANCE which should be handled by trained staff only.

Storage: -20 °C

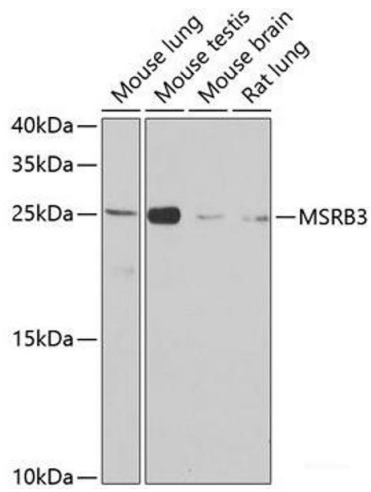
Storage Comment: Store at -20°C. Avoid freeze / thaw cycles.

## Images



### Immunofluorescence

**Image 1.** Immunofluorescence analysis of U2OS cells using MSRB3 Polyclonal Antibody at dilution of 1:100. Blue: DAPI for nuclear staining.



### Western Blotting

**Image 2.** Western blot analysis of extracts of various cell lines using MSRB3 Polyclonal Antibody at dilution of 1:1000.