

Datasheet for ABIN7264073

anti-MLF1 antibody**1** Image[Go to Product page](#)

Overview

| | |
|--------------|-------------------------------------|
| Quantity: | 200 µL |
| Target: | MLF1 |
| Reactivity: | Human, Mouse |
| Host: | Rabbit |
| Clonality: | Polyclonal |
| Conjugate: | This MLF1 antibody is un-conjugated |
| Application: | Immunofluorescence (IF) |

Product Details

| | |
|------------------|---|
| Immunogen: | Recombinant fusion protein of human MLF1 (NP_071888.1). |
| Isotype: | IgG |
| Characteristics: | Polyclonal Antibody |
| Purification: | Affinity purification |

Target Details

| | |
|-------------------|---|
| Target: | MLF1 |
| Alternative Name: | MLF1 (MLF1 Products) |
| Background: | This gene encodes an oncoprotein which is thought to play a role in the phenotypic determination of hemopoetic cells. Translocations between this gene and nucleophosmin have been associated with myelodysplastic syndrome and acute myeloid leukemia. Multiple transcript variants encoding different isoforms have been found for this gene. |

Target Details

Gene ID: 4291

UniProt: [P58340](#)

Application Details

Application Notes: IF 1:50-1:100

Restrictions: For Research Use only

Handling

Format: Liquid

Concentration: 1 mg/mL

Buffer: PBS with 0.02 % sodium azide, 50 % glycerol, pH 7.3

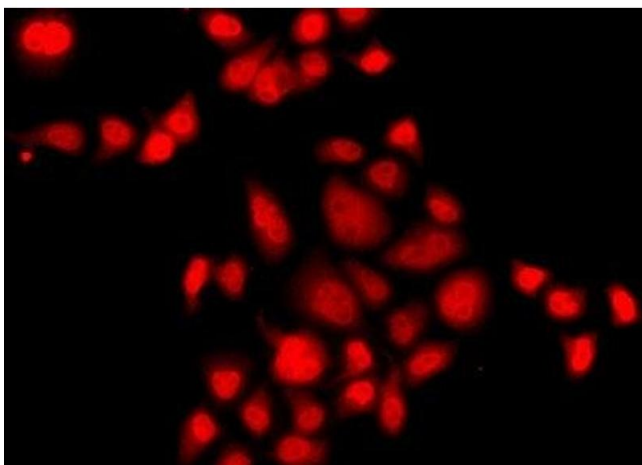
Preservative: Sodium azide

Precaution of Use: This product contains Sodium azide: a POISONOUS AND HAZARDOUS SUBSTANCE which should be handled by trained staff only.

Storage: -20 °C

Storage Comment: Store at -20°C. Avoid freeze / thaw cycles.

Images



Immunofluorescence

Image 1. Immunofluorescence analysis of A549 cells using MLF1 Polyclonal Antibody