



## Datasheet for ABIN7264091 anti-MYLK antibody



[Go to Product page](#)

### 3 Images

#### Overview

Quantity:	200 µL
Target:	MYLK
Reactivity:	Human, Mouse, Rat
Host:	Rabbit
Clonality:	Polyclonal
Conjugate:	This MYLK antibody is un-conjugated
Application:	Immunohistochemistry (IHC)

#### Product Details

Immunogen:	Recombinant fusion protein of human MYLK (NP_444253.3).
Isotype:	IgG
Characteristics:	Polyclonal Antibody
Purification:	Affinity purification

#### Target Details

Target:	MYLK
Alternative Name:	MYLK ( <a href="#">MYLK Products</a> )
Background:	This gene, a muscle member of the immunoglobulin gene superfamily, encodes myosin light chain kinase which is a calcium/calmodulin dependent enzyme. This kinase phosphorylates myosin regulatory light chains to facilitate myosin interaction with actin filaments to produce contractile activity. This gene encodes both smooth muscle and nonmuscle isoforms. In

## Target Details

---

addition, using a separate promoter in an intron in the 3' region, it encodes telokin, a small protein identical in sequence to the C-terminus of myosin light chain kinase, that is independently expressed in smooth muscle and functions to stabilize unphosphorylated myosin filaments. A pseudogene is located on the p arm of chromosome 3. Four transcript variants that produce four isoforms of the calcium/calmodulin dependent enzyme have been identified as well as two transcripts that produce two isoforms of telokin. Additional variants have been identified but lack full length transcripts.

---

Gene ID: 4638

---

UniProt: [Q15746](#)

## Application Details

---

Application Notes: IHC 1:50-1:100

---

Restrictions: For Research Use only

## Handling

---

Format: Liquid

---

Concentration: 1 mg/mL

---

Buffer: PBS with 0.02 % sodium azide, 50 % glycerol, pH 7.3

---

Preservative: Sodium azide

---

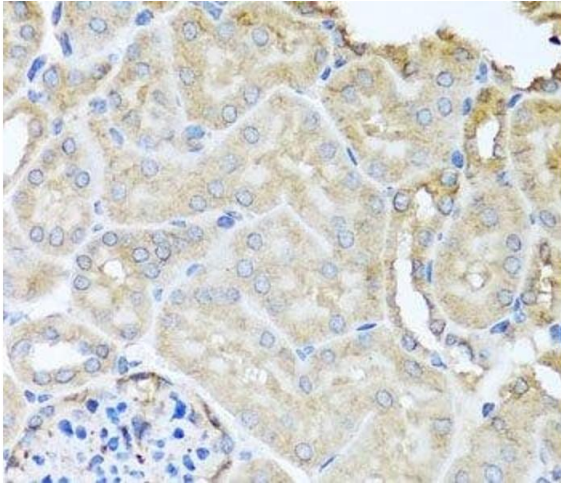
Precaution of Use: This product contains Sodium azide: a POISONOUS AND HAZARDOUS SUBSTANCE which should be handled by trained staff only.

---

Storage: -20 °C

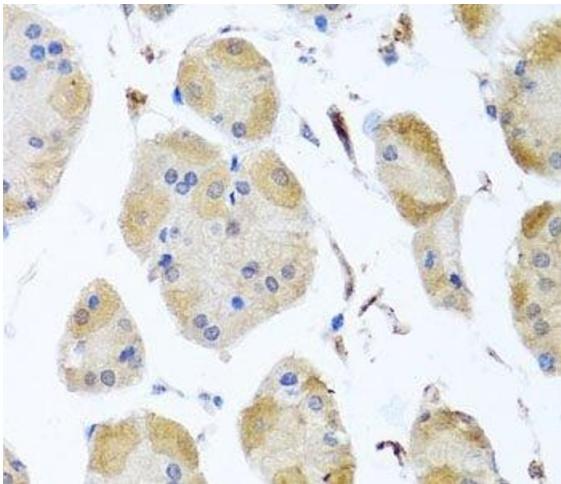
---

Storage Comment: Store at -20°C. Avoid freeze / thaw cycles.



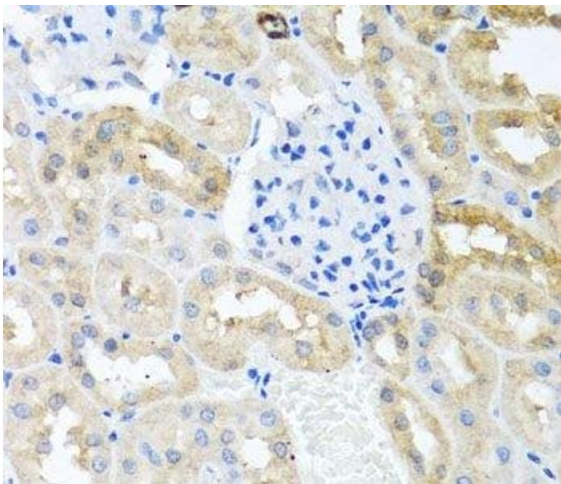
#### Immunohistochemistry (Paraffin-embedded Sections)

**Image 1.** Immunohistochemistry of paraffin-embedded Mouse kidney using MYLK Polyclonal Antibody at dilution of 1:100 (40x lens).



#### Immunohistochemistry (Paraffin-embedded Sections)

**Image 2.** Immunohistochemistry of paraffin-embedded Human stomach using MYLK Polyclonal Antibody at dilution of 1:100 (40x lens).



#### Immunohistochemistry (Paraffin-embedded Sections)

**Image 3.** Immunohistochemistry of paraffin-embedded Rat kidney using MYLK Polyclonal Antibody at dilution of 1:100 (40x lens).