

## Datasheet for ABIN7264111

**anti-MTCH1 antibody**

## 1 Image

[Go to Product page](#)

## Overview

Quantity:	200 µL
Target:	MTCH1
Reactivity:	Human, Mouse, Rat
Host:	Rabbit
Clonality:	Polyclonal
Conjugate:	This MTCH1 antibody is un-conjugated
Application:	Immunohistochemistry (IHC)

## Product Details

Immunogen:	Recombinant fusion protein of human MTCH1 (NP_001258570.1).
Isotype:	IgG
Characteristics:	Polyclonal Antibody
Purification:	Affinity purification

## Target Details

Target:	MTCH1
Alternative Name:	MTCH1 ( <a href="#">MTCH1 Products</a> )
Background:	This gene encodes a member of the mitochondrial carrier family. The encoded protein is localized to the mitochondrion inner membrane and induces apoptosis independent of the proapoptotic proteins Bax and Bak. Pseudogenes on chromosomes 6 and 11 have been identified for this gene. Alternatively spliced transcript variants encoding multiple isoforms have

## Target Details

	been observed.
Gene ID:	23787
UniProt:	<a href="#">Q9NZJ7</a>
Pathways:	<a href="#">Positive Regulation of Endopeptidase Activity</a> , <a href="#">SARS-CoV-2 Protein Interactome</a>

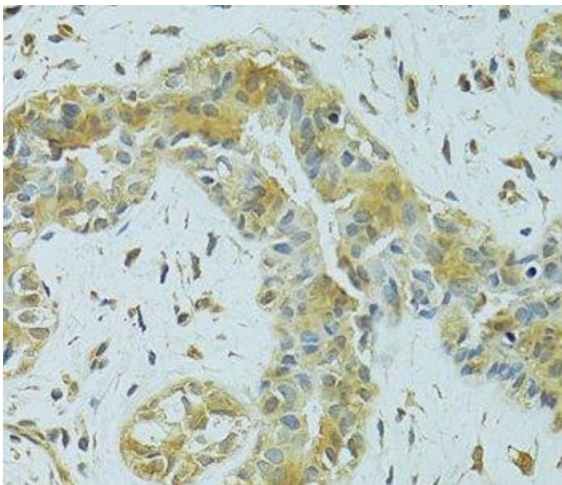
## Application Details

Application Notes:	IHC 1:50-1:200
Restrictions:	For Research Use only

## Handling

Format:	Liquid
Concentration:	1 mg/mL
Buffer:	PBS with 0.02 % sodium azide, 50 % glycerol, pH 7.3
Preservative:	Sodium azide
Precaution of Use:	This product contains Sodium azide: a POISONOUS AND HAZARDOUS SUBSTANCE which should be handled by trained staff only.
Storage:	-20 °C
Storage Comment:	Store at -20°C. Avoid freeze / thaw cycles.

## Images



### Immunohistochemistry (Paraffin-embedded Sections)

**Image 1.** Immunohistochemistry of paraffin-embedded Human breast cancer using MTCH1 Polyclonal Antibody at dilution of 1:100 (40x lens).