



Datasheet for ABIN7264151
anti-ENTPD5 antibody



[Go to Product page](#)

1 Image

Overview

Quantity:	200 µL
Target:	ENTPD5
Reactivity:	Human
Host:	Rabbit
Clonality:	Polyclonal
Conjugate:	This ENTPD5 antibody is un-conjugated
Application:	Immunofluorescence (IF)

Product Details

Immunogen:	Recombinant fusion protein of human ENTPD5 (NP_001240.1).
Isotype:	IgG
Characteristics:	Polyclonal Antibody
Purification:	Affinity purification

Target Details

Target:	ENTPD5
Alternative Name:	ENTPD5 (ENTPD5 Products)
Background:	The protein encoded by this gene is similar to E-type nucleotidases (NTPases)/ecto-ATPase/apyrases. NTPases, such as CD39, mediate catabolism of extracellular nucleotides. ENTPD5 contains 4 apyrase-conserved regions which is characteristic of NTPases.

Target Details

Gene ID: 957

UniProt: [O75356](#)

Application Details

Application Notes: IF 1:50-1:200

Restrictions: For Research Use only

Handling

Format: Liquid

Concentration: 1 mg/mL

Buffer: PBS with 0.02 % sodium azide, 50 % glycerol, pH 7.3

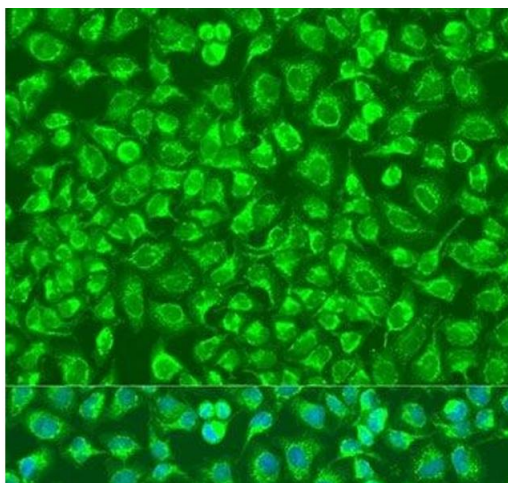
Preservative: Sodium azide

Precaution of Use: This product contains Sodium azide: a POISONOUS AND HAZARDOUS SUBSTANCE which should be handled by trained staff only.

Storage: -20 °C

Storage Comment: Store at -20°C. Avoid freeze / thaw cycles.

Images



Immunofluorescence

Image 1. Immunofluorescence analysis of U2OS cells using ENTPD5 Polyclonal Antibody at dilution of 1:100. Blue: DAPI for nuclear staining.