

Datasheet for ABIN7264183

anti-NDUFA2 antibody

4 Images

[Go to Product page](#)

Overview

| | |
|--------------|--|
| Quantity: | 200 µL |
| Target: | NDUFA2 |
| Reactivity: | Human, Mouse, Rat |
| Host: | Rabbit |
| Clonality: | Polyclonal |
| Conjugate: | This NDUFA2 antibody is un-conjugated |
| Application: | Western Blotting (WB), Immunohistochemistry (IHC), Immunofluorescence (IF) |

Product Details

| | |
|------------------|---|
| Immunogen: | Recombinant fusion protein of human NDUFA2 (NP_002479.1). |
| Isotype: | IgG |
| Characteristics: | Polyclonal Antibody |
| Purification: | Affinity purification |

Target Details

| | |
|-------------------|--|
| Target: | NDUFA2 |
| Alternative Name: | NDUFA2 (NDUFA2 Products) |
| Background: | The encoded protein is a subunit of the hydrophobic protein fraction of the NADH:ubiquinone oxidoreductase (complex 1), the first enzyme complex in the electron transport chain located in the inner mitochondrial membrane, and may be involved in regulating complex I activity or its assembly via assistance in redox processes. Mutations in this gene are associated with Leigh |

Target Details

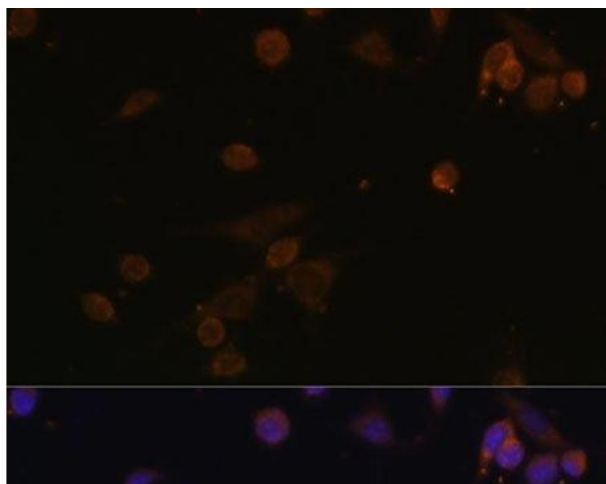
| | |
|-------------------|--|
| | syndrome, an early-onset progressive neurodegenerative disorder. Alternative splicing results in multiple transcript variants. |
| Molecular Weight: | Observed_MW: 11 kDa Calculated_MW: 8 kDa/10 kDa |
| Gene ID: | 4695 |
| UniProt: | O43678 |

Application Details

| | |
|--------------------|--|
| Application Notes: | WB 1:500-1:2000 IHC 1:50-1:100 IF 1:50-1:200 |
| Restrictions: | For Research Use only |

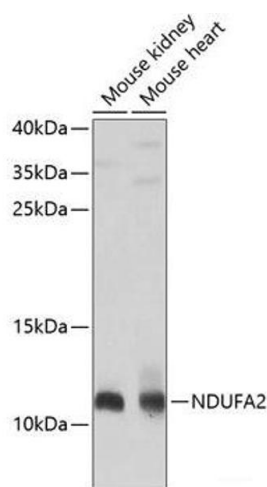
Handling

| | |
|--------------------|--|
| Format: | Liquid |
| Concentration: | 1 mg/mL |
| Buffer: | PBS with 0.02 % sodium azide, 50 % glycerol, pH 7.3 |
| Preservative: | Sodium azide |
| Precaution of Use: | This product contains Sodium azide: a POISONOUS AND HAZARDOUS SUBSTANCE which should be handled by trained staff only. |
| Storage: | -20 °C |
| Storage Comment: | Store at -20°C. Avoid freeze / thaw cycles. |



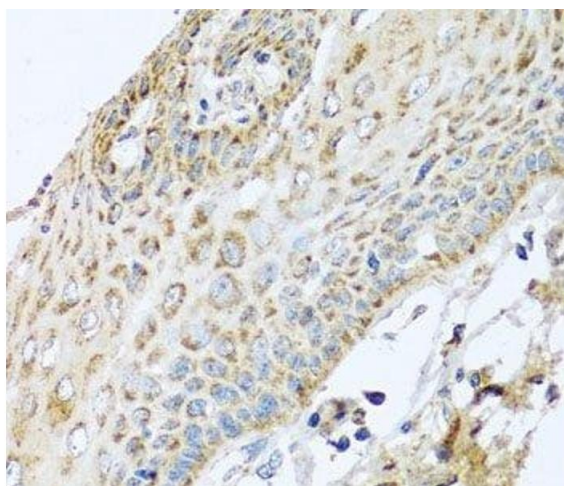
Immunofluorescence

Image 1. Immunofluorescence analysis of NIH/3T3 cells using NDUFA2 Polyclonal Antibody at dilution of 1:100. Blue: DAPI for nuclear staining.



Western Blotting

Image 2. Western blot analysis of extracts of various cell lines using NDUFA2 Polyclonal Antibody at dilution of 1:1000.



Immunohistochemistry (Paraffin-embedded Sections)

Image 3. Immunohistochemistry of paraffin-embedded Human esophagus using NDUFA2 Polyclonal Antibody at dilution of 1:100 (40x lens).

Please check the [product details page](#) for more images. Overall 4 images are available for ABIN7264183.