

Datasheet for ABIN7264207

**anti-Spermidine Synthase antibody**[Go to Product page](#)**1** Image

## Overview

Quantity:	200 µL
Target:	Spermidine Synthase (SRM)
Reactivity:	Human, Mouse, Rat
Host:	Rabbit
Clonality:	Polyclonal
Conjugate:	This Spermidine Synthase antibody is un-conjugated
Application:	Western Blotting (WB)

## Product Details

Immunogen:	Recombinant fusion protein of human SRM (NP_003123.2).
Isotype:	IgG
Characteristics:	Polyclonal Antibody
Purification:	Affinity purification

## Target Details

Target:	Spermidine Synthase (SRM)
Alternative Name:	SRM ( <a href="#">SRM Products</a> )
Background:	The polyamines putrescine, spermine, and spermidine are ubiquitous polycationic mediators of cell growth and differentiation. Spermidine synthase is one of four enzymes in the polyamine-biosynthetic pathway and carries out the final step of spermidine biosynthesis. This enzyme catalyzes the conversion of putrescine to spermidine using decarboxylated S-

## Target Details

	adenosylmethionine as the cofactor.
Molecular Weight:	Observed_MW: 35 kDa Calculated_MW: 33 kDa
Gene ID:	6723
UniProt:	<a href="#">P19623</a>

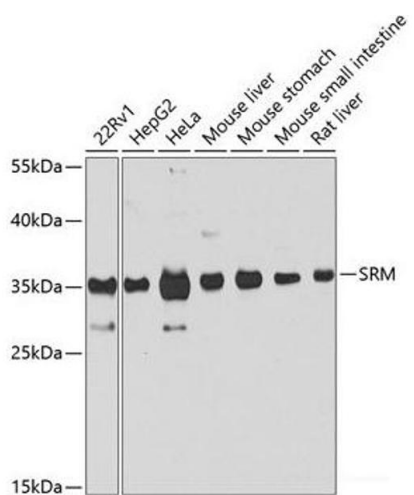
## Application Details

Application Notes:	WB 1:500-1:2000
Restrictions:	For Research Use only

## Handling

Format:	Liquid
Concentration:	1 mg/mL
Buffer:	PBS with 0.02 % sodium azide, 50 % glycerol, pH 7.3
Preservative:	Sodium azide
Precaution of Use:	This product contains Sodium azide: a POISONOUS AND HAZARDOUS SUBSTANCE which should be handled by trained staff only.
Storage:	-20 °C
Storage Comment:	Store at -20°C. Avoid freeze / thaw cycles.

## Images



### Western Blotting

**Image 1.** Western blot analysis of extracts of various cell lines using SRM Polyclonal Antibody at dilution of 1:1000.