

Datasheet for ABIN7264225
anti-Syntaxin 16 antibody[Go to Product page](#)

1 Image

Overview

Quantity:	200 µL
Target:	Syntaxin 16 (STX16)
Reactivity:	Human
Host:	Rabbit
Clonality:	Polyclonal
Conjugate:	This Syntaxin 16 antibody is un-conjugated
Application:	Immunohistochemistry (IHC)

Product Details

Immunogen:	Recombinant fusion protein of human STX16 (NP_001128244.1).
Isotype:	IgG
Characteristics:	Polyclonal Antibody
Purification:	Affinity purification

Target Details

Target:	Syntaxin 16 (STX16)
Alternative Name:	STX16 (STX16 Products)
Background:	This gene encodes a protein that is a member of the syntaxin or t-SNARE (target-SNAP receptor) family. These proteins are found on cell membranes and serve as the targets for V-SNARES (vesicle-SNAP receptors) permitting specific synaptic vesicle docking and fusion. A microdeletion in the region of chromosome 20 where this gene is located has been associated

Target Details

with pseudohypoparathyroidism type Ib. Multiple transcript variants have been found for this gene. Read-through transcription also exists between this gene and the neighboring downstream aminopeptidase-like 1 (NPEPL1) gene.

Gene ID: 8675

UniProt: [O14662](#)

Pathways: [Synaptic Vesicle Exocytosis](#)

Application Details

Application Notes: IHC 1:50-1:100

Restrictions: For Research Use only

Handling

Format: Liquid

Concentration: 1 mg/mL

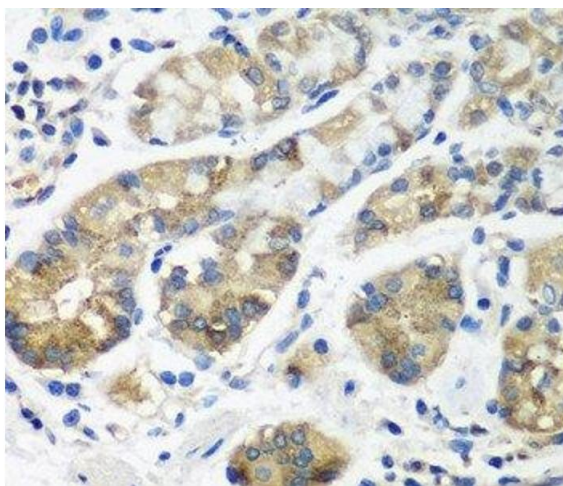
Buffer: PBS with 0.02 % sodium azide, 50 % glycerol, pH 7.3

Preservative: Sodium azide

Precaution of Use: This product contains Sodium azide: a POISONOUS AND HAZARDOUS SUBSTANCE which should be handled by trained staff only.

Storage: -20 °C

Storage Comment: Store at -20°C. Avoid freeze / thaw cycles.



Immunohistochemistry (Paraffin-embedded Sections)

Image 1. Immunohistochemistry of paraffin-embedded Human stomach using STX16 Polyclonal Antibody at dilution of 1:100 (40x lens).