

Datasheet for ABIN7264259
anti-IL36A/IL1F6 antibody[Go to Product page](#)

1 Image

Overview

Quantity:	200 µL
Target:	IL36A/IL1F6 (IL1F6)
Reactivity:	Human, Mouse, Rat
Host:	Rabbit
Clonality:	Polyclonal
Conjugate:	This IL36A/IL1F6 antibody is un-conjugated
Application:	Western Blotting (WB)

Product Details

Immunogen:	Recombinant fusion protein of human IL36A (NP_055255.1).
Isotype:	IgG
Characteristics:	Polyclonal Antibody
Purification:	Affinity purification

Target Details

Target:	IL36A/IL1F6 (IL1F6)
Alternative Name:	IL36A (IL1F6 Products)
Background:	The protein encoded by this gene is a cytokine that can activate NF-kappa-B and MAPK signaling pathways to generate an inflammatory response. The encoded protein functions primarily in skin and demonstrates increased expression in psoriasis. In addition, decreased expression of this gene has been linked to a poor prognosis in both hepatocellular carcinoma

Target Details

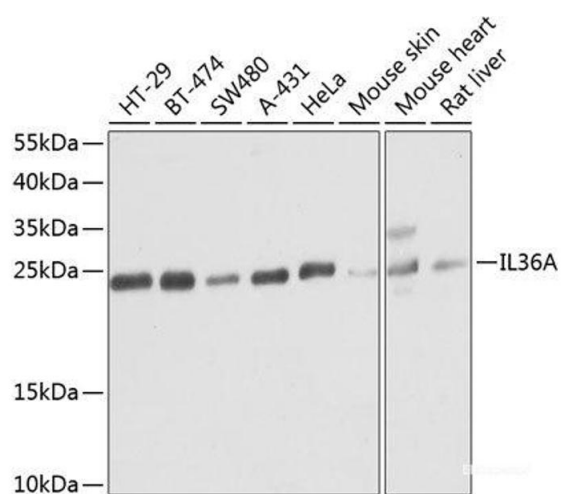
	and colorectal cancer patients.
Molecular Weight:	Observed_MW: 23 kDa Calculated_MW: 17 kDa
Gene ID:	27179
UniProt:	Q9UHA7
Pathways:	Cancer Immune Checkpoints

Application Details

Application Notes:	WB 1:500-1:2000
Restrictions:	For Research Use only

Handling

Format:	Liquid
Concentration:	1 mg/mL
Buffer:	PBS with 0.02 % sodium azide, 50 % glycerol, pH 7.3
Preservative:	Sodium azide
Precaution of Use:	This product contains Sodium azide: a POISONOUS AND HAZARDOUS SUBSTANCE which should be handled by trained staff only.
Storage:	-20 °C
Storage Comment:	Store at -20°C. Avoid freeze / thaw cycles.



Western Blotting

Image 1. Western blot analysis of extracts of various cell lines using IL36A Polyclonal Antibody at dilution of 1:1000.