

Datasheet for ABIN7264309

anti-RNF166 antibody

4 Images



[Go to Product page](#)

Overview

Quantity:	200 µL
Target:	RNF166
Reactivity:	Human, Mouse, Rat
Host:	Rabbit
Clonality:	Polyclonal
Conjugate:	This RNF166 antibody is un-conjugated
Application:	Immunohistochemistry (IHC)

Product Details

Immunogen:	A synthetic peptide of human RNF166 (NP_849163.1).
Isotype:	IgG
Characteristics:	Polyclonal Antibody
Purification:	Affinity purification

Target Details

Target:	RNF166
Alternative Name:	RNF166 (RNF166 Products)
Background:	RNF166 (Ring Finger Protein 166) is a Protein Coding gene. Diseases associated with RNF166 include Generalized Epilepsy With Febrile Seizures Plus, Type 9 and Myopathy, Congenital, Compton-North. An important paralog of this gene is RNF114.

Target Details

Gene ID: 115992

UniProt: [Q96A37](#)

Application Details

Application Notes: IHC 1:50-1:200

Restrictions: For Research Use only

Handling

Format: Liquid

Concentration: 1 mg/mL

Buffer: PBS with 0.02 % sodium azide, 50 % glycerol, pH 7.3

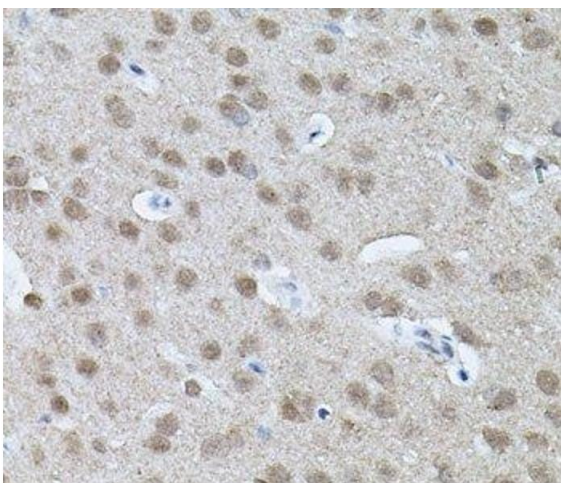
Preservative: Sodium azide

Precaution of Use: This product contains Sodium azide: a POISONOUS AND HAZARDOUS SUBSTANCE which should be handled by trained staff only.

Storage: -20 °C

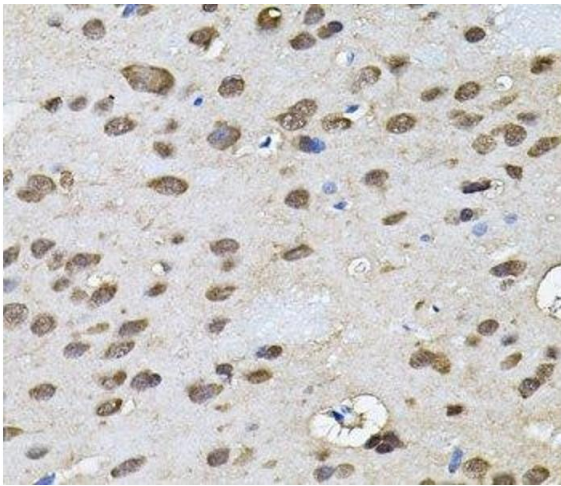
Storage Comment: Store at -20°C. Avoid freeze / thaw cycles.

Images



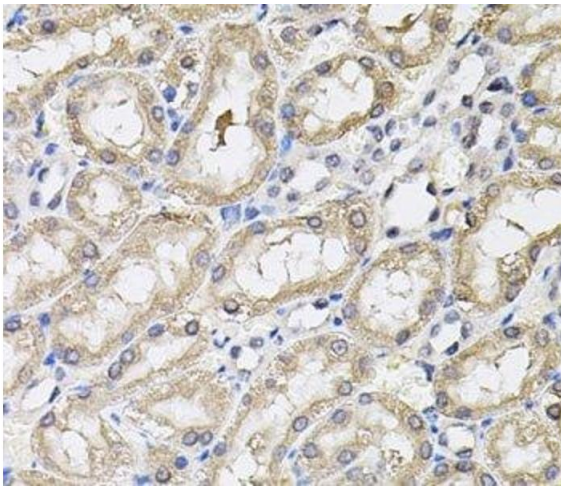
Immunohistochemistry (Paraffin-embedded Sections)

Image 1. Immunohistochemistry of paraffin-embedded Mouse brain using RNF166 Polyclonal Antibody



Immunohistochemistry (Paraffin-embedded Sections)

Image 2. Immunohistochemistry of paraffin-embedded Rat brain using RNF166 Polyclonal Antibody



Immunohistochemistry (Paraffin-embedded Sections)

Image 3. Immunohistochemistry of paraffin-embedded Rat kidney using RNF166 Polyclonal Antibody

Please check the [product details page](#) for more images. Overall 4 images are available for ABIN7264309.