

Datasheet for ABIN7264321

anti-CEP57L1 antibody

3 Images



[Go to Product page](#)

Overview

Quantity:	200 µL
Target:	CEP57L1
Reactivity:	Human
Host:	Rabbit
Clonality:	Polyclonal
Conjugate:	This CEP57L1 antibody is un-conjugated
Application:	Western Blotting (WB), Immunohistochemistry (IHC), Immunofluorescence (IF)

Product Details

Immunogen:	Recombinant fusion protein of human CEP57L1 (NP_776191.1).
Isotype:	IgG
Characteristics:	Polyclonal Antibody
Purification:	Affinity purification

Target Details

Target:	CEP57L1
Alternative Name:	CEP57L1 (CEP57L1 Products)
Background:	CEP57L1 (Centrosomal Protein 57 Like 1) is a Protein Coding gene. Gene Ontology (GO) annotations related to this gene include identical protein binding and gamma-tubulin binding. An important paralog of this gene is CEP57.

Target Details

Molecular Weight:	Observed_MW: 60 kDa Calculated_MW: 45 kDa/53 kDa
Gene ID:	285753
UniProt:	Q8IYX8
Pathways:	Maintenance of Protein Location

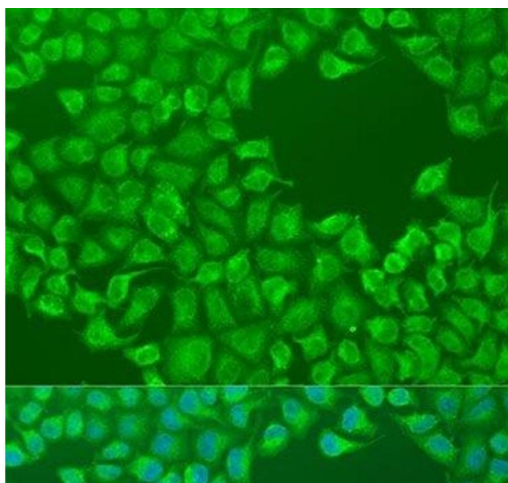
Application Details

Application Notes:	WB 1:500-1:2000 IHC 1:50-1:100 IF 1:50-1:100
Restrictions:	For Research Use only

Handling

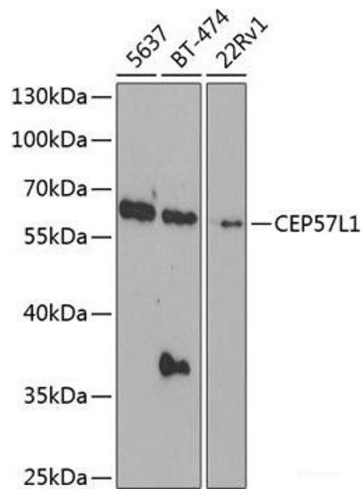
Format:	Liquid
Concentration:	1 mg/mL
Buffer:	PBS with 0.02 % sodium azide, 50 % glycerol, pH 7.3
Preservative:	Sodium azide
Precaution of Use:	This product contains Sodium azide: a POISONOUS AND HAZARDOUS SUBSTANCE which should be handled by trained staff only.
Storage:	-20 °C
Storage Comment:	Store at -20°C. Avoid freeze / thaw cycles.

Images



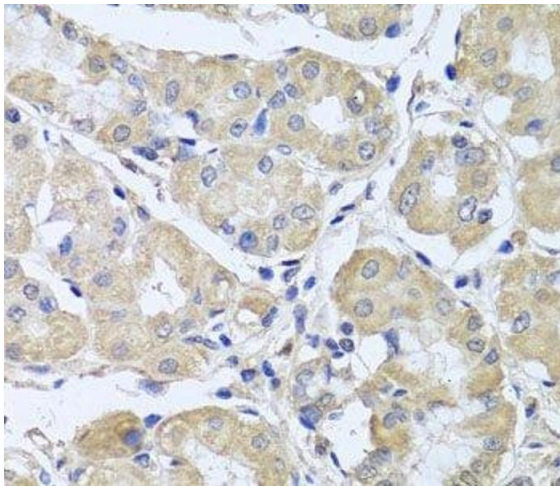
Immunofluorescence

Image 1. Immunofluorescence analysis of U2OS cells using CEP57L1 Polyclonal Antibody at dilution of 1:100. Blue: DAPI for nuclear staining.



Western Blotting

Image 2. Western blot analysis of extracts of various cell lines using CEP57L1 Polyclonal Antibody at dilution of 1:1000.



Immunohistochemistry (Paraffin-embedded Sections)

Image 3. Immunohistochemistry of paraffin-embedded Human stomach using CEP57L1 Polyclonal Antibody at dilution of 1:100 (40x lens).