

Datasheet for ABIN7264339

**anti-ITPK1 antibody****1** Image[Go to Product page](#)

## Overview

Quantity:	200 µL
Target:	ITPK1
Reactivity:	Human, Mouse, Rat
Host:	Rabbit
Clonality:	Polyclonal
Conjugate:	This ITPK1 antibody is un-conjugated
Application:	Western Blotting (WB)

## Product Details

Immunogen:	Recombinant fusion protein of human ITPK1 (NP_055031.2).
Isotype:	IgG
Characteristics:	Polyclonal Antibody
Purification:	Affinity purification

## Target Details

Target:	ITPK1
Alternative Name:	ITPK1 ( <a href="#">ITPK1 Products</a> )
Background:	This gene encodes an enzyme that belongs to the inositol 1,3,4-trisphosphate 5/6-kinase family. This enzyme regulates the synthesis of inositol tetraphosphate, and downstream products, inositol pentakisphosphate and inositol hexakisphosphate. Inositol metabolism plays a role in the development of the neural tube. Disruptions in this gene are thought to be

## Target Details

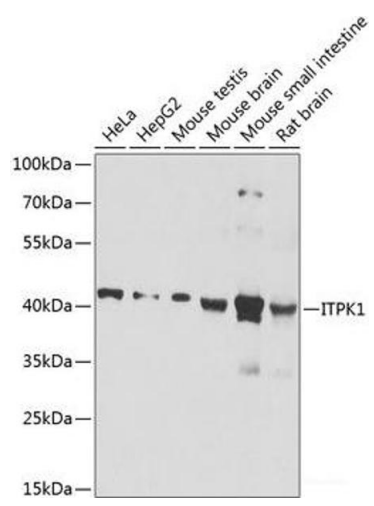
	associated with neural tube defects. A pseudogene of this gene has been identified on chromosome X.
Molecular Weight:	Observed_MW: 39 kDa Calculated_MW: 35 kDa/45 kDa
Gene ID:	3705
UniProt:	<a href="#">Q13572</a>

## Application Details

Application Notes:	WB 1:500-1:2000
Restrictions:	For Research Use only

## Handling

Format:	Liquid
Concentration:	1 mg/mL
Buffer:	PBS with 0.02 % sodium azide, 50 % glycerol, pH 7.3
Preservative:	Sodium azide
Precaution of Use:	This product contains Sodium azide: a POISONOUS AND HAZARDOUS SUBSTANCE which should be handled by trained staff only.
Storage:	-20 °C
Storage Comment:	Store at -20°C. Avoid freeze / thaw cycles.



Western Blotting

**Image 1.** Western blot analysis of extracts of various cell lines using ITPK1 Polyclonal Antibody at dilution of 1:1000.