



[Go to Product page](#)

Datasheet for ABIN7264359

anti-AP1m2 antibody

3 Images

Overview

Quantity:	200 µL
Target:	AP1m2
Reactivity:	Human, Mouse
Host:	Rabbit
Clonality:	Polyclonal
Conjugate:	This AP1m2 antibody is un-conjugated
Application:	Immunohistochemistry (IHC), Immunofluorescence (IF)

Product Details

Immunogen:	Recombinant fusion protein of human AP1M2 (NP_005489.2).
Isotype:	IgG
Characteristics:	Polyclonal Antibody
Purification:	Affinity purification

Target Details

Target:	AP1m2
Alternative Name:	AP1M2 (AP1m2 Products)
Background:	This gene encodes a subunit of the heterotetrameric adaptor-related protein complex 1 (AP-1), which belongs to the adaptor complexes medium subunits family. This protein is capable of interacting with tyrosine-based sorting signals. Alternative splicing results in multiple transcript variants.

Target Details

Gene ID: 10053

UniProt: [Q9Y6Q5](#)

Application Details

Application Notes: IHC 1:50-1:100 IF 1:50-1:200

Restrictions: For Research Use only

Handling

Format: Liquid

Concentration: 1 mg/mL

Buffer: PBS with 0.02 % sodium azide, 50 % glycerol, pH 7.3

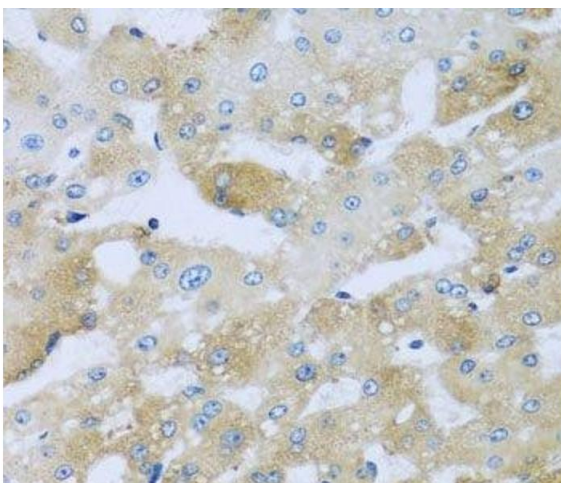
Preservative: Sodium azide

Precaution of Use: This product contains Sodium azide: a POISONOUS AND HAZARDOUS SUBSTANCE which should be handled by trained staff only.

Storage: -20 °C

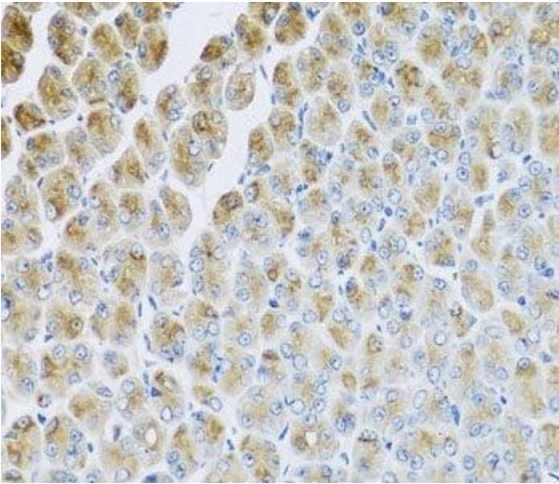
Storage Comment: Store at -20°C. Avoid freeze / thaw cycles.

Images



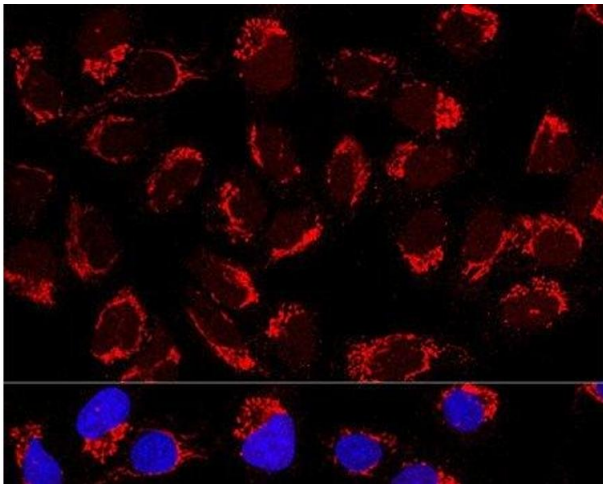
Immunohistochemistry (Paraffin-embedded Sections)

Image 1. Immunohistochemistry of paraffin-embedded Human liver damage using AP1M2 Polyclonal Antibody at dilution of 1:100 (40x lens).



Immunohistochemistry (Paraffin-embedded Sections)

Image 2. Immunohistochemistry of paraffin-embedded Mouse stomach using AP1M2 Polyclonal Antibody at dilution of 1:100 (40x lens).



Immunofluorescence

Image 3. Confocal immunofluorescence analysis of U2OS cells using AP1M2 Polyclonal Antibody at dilution of 1:200. Blue: DAPI for nuclear staining.