

Datasheet for ABIN7264403

anti-Crossover junction endonuclease EME1 (EME1) antibody[Go to Product page](#)**1** Image

Overview

Quantity:	200 µL
Target:	Crossover junction endonuclease EME1 (EME1)
Reactivity:	Mouse, Rat
Host:	Rabbit
Clonality:	Polyclonal
Conjugate:	Un-conjugated
Application:	Western Blotting (WB)

Product Details

Immunogen:	Recombinant fusion protein of human EME1 (NP_689676.2).
Isotype:	IgG
Characteristics:	Polyclonal Antibody
Purification:	Affinity purification

Target Details

Target:	Crossover junction endonuclease EME1 (EME1)
Alternative Name:	EME1 (EME1 Products)
Background:	This gene encodes a protein that complexes with methyl methanesulfonate-sensitive UV-sensitive 81 protein to form an endonuclease complex. The encoded protein interacts with specific DNA structures including nicked Holliday junctions, 3'-flap structures and aberrant replication fork structures. This protein may be involved in repairing DNA damage and in

Target Details

	maintaining genomic stability. Alternative splicing results in multiple transcript variants.
Molecular Weight:	Observed_MW: 63 kDa Calculated_MW: 63 kDa/64 kDa
Gene ID:	146956
UniProt:	Q96AY2

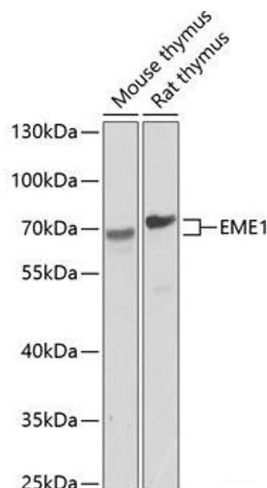
Application Details

Application Notes:	WB 1:500-1:2000
Restrictions:	For Research Use only

Handling

Format:	Liquid
Concentration:	1 mg/mL
Buffer:	PBS with 0.02 % sodium azide, 50 % glycerol, pH 7.3
Preservative:	Sodium azide
Precaution of Use:	This product contains Sodium azide: a POISONOUS AND HAZARDOUS SUBSTANCE which should be handled by trained staff only.
Storage:	-20 °C
Storage Comment:	Store at -20°C. Avoid freeze / thaw cycles.

Images



Western Blotting

Image 1. Western blot analysis of extracts of various cell lines using EME1 Polyclonal Antibody at dilution of 1:1000.