



Datasheet for ABIN7264405 anti-UBE2U antibody



[Go to Product page](#)

2 Images

Overview

Quantity:	200 µL
Target:	UBE2U
Reactivity:	Human, Mouse
Host:	Rabbit
Clonality:	Polyclonal
Conjugate:	This UBE2U antibody is un-conjugated
Application:	Immunohistochemistry (IHC)

Product Details

Immunogen:	Recombinant fusion protein of human UBE2U (NP_689702.1).
Isotype:	IgG
Characteristics:	Polyclonal Antibody
Purification:	Affinity purification

Target Details

Target:	UBE2U
Alternative Name:	UBE2U (UBE2U Products)
Background:	UBE2U (Ubiquitin Conjugating Enzyme E2 U) is a Protein Coding gene. Diseases associated with UBE2U include Brachydactyly, Type E2. Among its related pathways are Remodeling of Adherens Junctions and Innate Immune System. Gene Ontology (GO) annotations related to this gene include ligase activity and ubiquitin protein ligase activity. An important paralog of this

Target Details

gene is UBE2B.

Gene ID: 148581

UniProt: [Q5VXX9](#)

Application Details

Application Notes: IHC 1:50-1:100

Restrictions: For Research Use only

Handling

Format: Liquid

Concentration: 1 mg/mL

Buffer: PBS with 0.02 % sodium azide, 50 % glycerol, pH 7.3

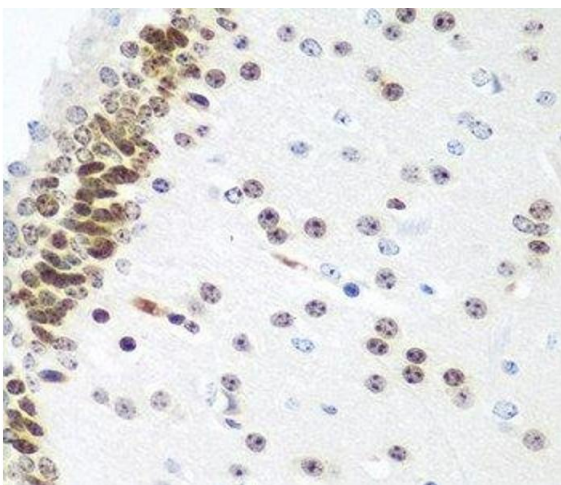
Preservative: Sodium azide

Precaution of Use: This product contains Sodium azide: a POISONOUS AND HAZARDOUS SUBSTANCE which should be handled by trained staff only.

Storage: -20 °C

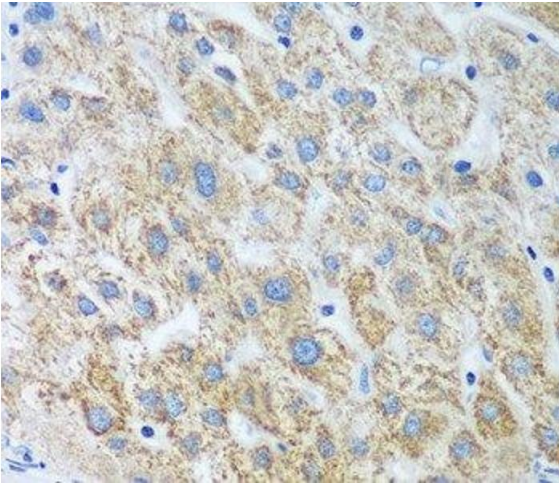
Storage Comment: Store at -20°C. Avoid freeze / thaw cycles.

Images



Immunohistochemistry (Paraffin-embedded Sections)

Image 1. Immunohistochemistry of paraffin-embedded Mouse brain using UBE2U Polyclonal Antibody at dilution of 1:100 (40x lens).



Immunohistochemistry (Paraffin-embedded Sections)

Image 2. Immunohistochemistry of paraffin-embedded Human liver using UBE2U Polyclonal Antibody at dilution of 1:100 (40x lens).