



Datasheet for ABIN7264441 anti-DLX2 antibody



[Go to Product page](#)

1 Image

Overview

Quantity:	200 µL
Target:	DLX2
Reactivity:	Rat
Host:	Rabbit
Clonality:	Polyclonal
Conjugate:	This DLX2 antibody is un-conjugated
Application:	Western Blotting (WB)

Product Details

Immunogen:	Recombinant fusion protein of human DLX2 (NP_004396.1).
Isotype:	IgG
Characteristics:	Polyclonal Antibody
Purification:	Affinity purification

Target Details

Target:	DLX2
Alternative Name:	DLX2 (DLX2 Products)
Background:	Many vertebrate homeo box-containing genes have been identified on the basis of their sequence similarity with Drosophila developmental genes. Members of the Dlx gene family contain a homeobox that is related to that of Distal-less (Dll), a gene expressed in the head and limbs of the developing fruit fly. The Distal-less (Dlx) family of genes comprises at least 6

Target Details

different members, DLX1-DLX6. The DLX proteins are postulated to play a role in forebrain and craniofacial development. This gene is located in a tail-to-tail configuration with another member of the gene family on the long arm of chromosome 2.

Molecular Weight: Observed_MW: 39 kDa
Calculated_MW: 23 kDa/34 kDa

Gene ID: 1746

UniProt: [Q07687](#)

Application Details

Application Notes: WB 1:500-1:2000

Restrictions: For Research Use only

Handling

Format: Liquid

Concentration: 1 mg/mL

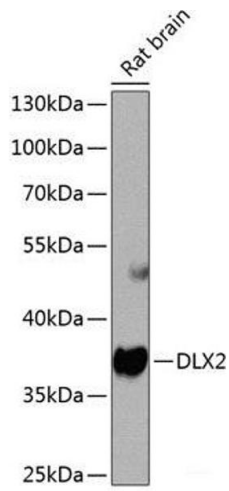
Buffer: PBS with 0.02 % sodium azide, 50 % glycerol, pH 7.3

Preservative: Sodium azide

Precaution of Use: This product contains Sodium azide: a POISONOUS AND HAZARDOUS SUBSTANCE which should be handled by trained staff only.

Storage: -20 °C

Storage Comment: Store at -20°C. Avoid freeze / thaw cycles.



Western Blotting

Image 1. Western blot analysis of extracts of Rat brain using DLX2 Polyclonal Antibody at dilution of 1:1000.