

Datasheet for ABIN7264459

**anti-GNG10 antibody****1** Image[Go to Product page](#)

## Overview

|              |                                      |
|--------------|--------------------------------------|
| Quantity:    | 200 µL                               |
| Target:      | GNG10                                |
| Reactivity:  | Human, Mouse, Rat                    |
| Host:        | Rabbit                               |
| Clonality:   | Polyclonal                           |
| Conjugate:   | This GNG10 antibody is un-conjugated |
| Application: | Western Blotting (WB)                |

## Product Details

|                  |   |
|------------------|---|
| Immunogen:       | Recombinant fusion protein of human GNG10 (NP_001017998.1). |
| Isotype:         | IgG   |
| Characteristics: | Polyclonal Antibody   |
| Purification:    | Affinity purification                                       |

## Target Details

|                   |  |
|-------------------|--|
| Target:           | GNG10  |
| Alternative Name: | GNG10 ( <a href="#">GNG10 Products</a> )   |
| Background:       | GNG10 (G Protein Subunit Gamma 10) is a Protein Coding gene. Diseases associated with GNG10 include Good Syndrome. Among its related pathways are Translation Translation regulation by Alpha-1 adrenergic receptors and Sweet Taste Signaling. Gene Ontology (GO) annotations related to this gene include GTPase activity and obsolete signal transducer activity. |

### Target Details

|                   |   |
|-------------------|---|
|                   | An important paralog of this gene is GNG5.  |
| Molecular Weight: | Observed_MW: 14 kDa<br>Calculated_MW: 7 kDa |
| Gene ID:          | 2790  |
| UniProt:          | <a href="#">P50151</a>                      |

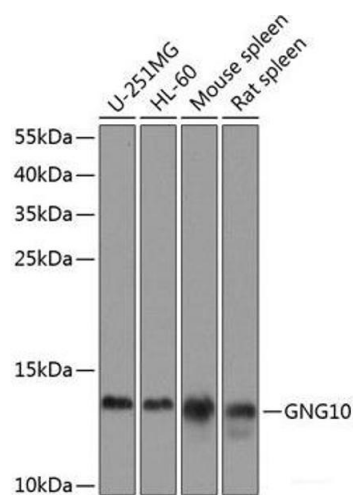
### Application Details

|                    |                       |
|--------------------|-----------------------|
| Application Notes: | WB 1:500-1:2000       |
| Restrictions:      | For Research Use only |

### Handling

|                    |  |
|--------------------|--|
| Format:            | Liquid   |
| Concentration:     | 1 mg/mL  |
| Buffer:            | PBS with 0.02 % sodium azide, 50 % glycerol, pH 7.3  |
| Preservative:      | Sodium azide   |
| Precaution of Use: | This product contains Sodium azide: a POISONOUS AND HAZARDOUS SUBSTANCE which should be handled by trained staff only. |
| Storage:           | -20 °C   |
| Storage Comment:   | Store at -20°C. Avoid freeze / thaw cycles.  |

### Images



#### Western Blotting

**Image 1.** Western blot analysis of extracts of various cell lines using GNG10 Polyclonal Antibody at dilution of 1:1000.