

Datasheet for ABIN7264469

**anti-ITGB8 antibody****3** Images[Go to Product page](#)

## Overview

Quantity:	200 µL
Target:	ITGB8
Reactivity:	Human, Mouse, Rat
Host:	Rabbit
Clonality:	Polyclonal
Conjugate:	This ITGB8 antibody is un-conjugated
Application:	Western Blotting (WB), Immunohistochemistry (IHC)

## Product Details

Immunogen:	Recombinant fusion protein of human ITGB8 (NP_002205.1).
Isotype:	IgG
Characteristics:	Polyclonal Antibody
Purification:	Affinity purification

## Target Details

Target:	ITGB8
Alternative Name:	ITGB8 ( <a href="#">ITGB8 Products</a> )
Background:	This gene is a member of the integrin beta chain family and encodes a single-pass type I membrane protein with a VWFA domain and four cysteine-rich repeats. This protein noncovalently binds to an alpha subunit to form a heterodimeric integrin complex. In general, integrin complexes mediate cell-cell and cell-extracellular matrix interactions and this complex

## Target Details

plays a role in human airway epithelial proliferation. Alternatively spliced variants which encode different protein isoforms have been described, however, not all variants have been fully characterized.

Molecular Weight: Observed\_MW: 100 kDa  
Calculated\_MW: 71 kDa/85 kDa

Gene ID: 3696

UniProt: [P26012](#)

## Application Details

Application Notes: WB 1:500-1:2000 IHC 1:50-1:200

Restrictions: For Research Use only

## Handling

Format: Liquid

Concentration: 1 mg/mL

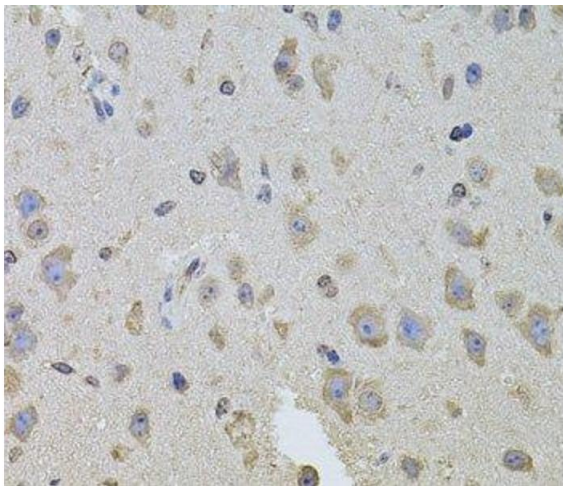
Buffer: PBS with 0.02 % sodium azide, 50 % glycerol, pH 7.3

Preservative: Sodium azide

Precaution of Use: This product contains Sodium azide: a POISONOUS AND HAZARDOUS SUBSTANCE which should be handled by trained staff only.

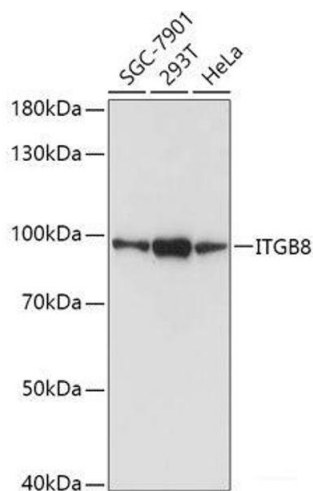
Storage: -20 °C

Storage Comment: Store at -20°C. Avoid freeze / thaw cycles.



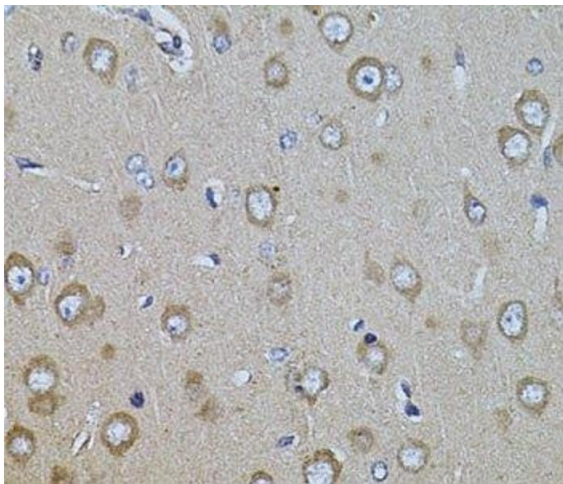
**Immunohistochemistry (Paraffin-embedded Sections)**

**Image 1.** Immunohistochemistry of paraffin-embedded Mouse brain using ITGB8 Polyclonal Antibody at dilution of 1:100 (40x lens).



**Western Blotting**

**Image 2.** Western blot analysis of extracts of various cell lines using ITGB8 Polyclonal Antibody at dilution of 1:1000.



**Immunohistochemistry (Paraffin-embedded Sections)**

**Image 3.** Immunohistochemistry of paraffin-embedded Rat brain using ITGB8 Polyclonal Antibody at dilution of 1:100 (40x lens).