

Datasheet for ABIN7264479

**anti-NEFH antibody**

## 6 Images

[Go to Product page](#)

## Overview

Quantity:	200 µL
Target:	NEFH
Reactivity:	Human, Rat, Mouse
Host:	Rabbit
Clonality:	Polyclonal
Conjugate:	This NEFH antibody is un-conjugated
Application:	Western Blotting (WB), Immunohistochemistry (IHC), Immunofluorescence (IF)

## Product Details

Immunogen:	Recombinant fusion protein of human NEFH (NP_066554.2).
Isotype:	IgG
Characteristics:	Polyclonal Antibody
Purification:	Affinity purification

## Target Details

Target:	NEFH
Alternative Name:	NEFH ( <a href="#">NEFH Products</a> )
Background:	Neurofilaments are type IV intermediate filament heteropolymers composed of light, medium, and heavy chains. Neurofilaments comprise the axoskeleton and functionally maintain neuronal caliber. They may also play a role in intracellular transport to axons and dendrites. This gene encodes the heavy neurofilament protein. This protein is commonly used as a biomarker of

## Target Details

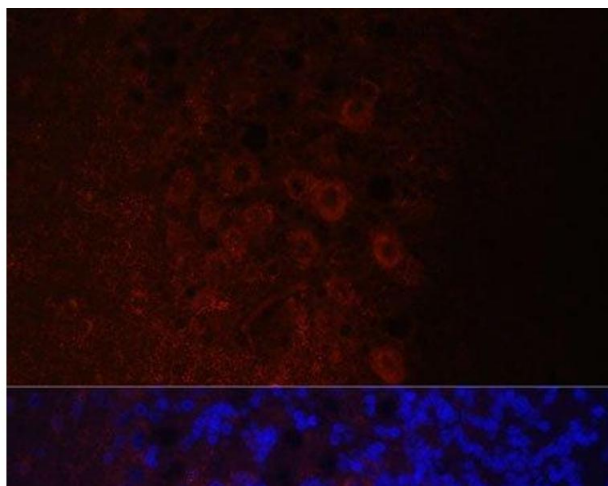
	neuronal damage and susceptibility to amyotrophic lateral sclerosis (ALS) has been associated with mutations in this gene.
Molecular Weight:	Observed_MW: 240 kDa Calculated_MW: 105 kDa/112 kDa
Gene ID:	4744
UniProt:	<a href="#">P12036</a>

## Application Details

Application Notes:	WB 1:500-1:2000 IHC 1:50-1:100 IF 1:50-1:100
Restrictions:	For Research Use only

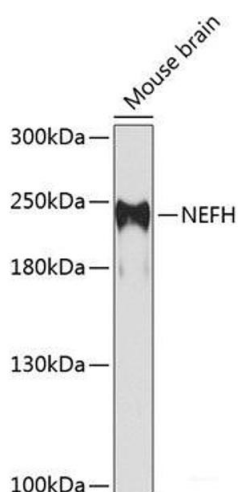
## Handling

Format:	Liquid
Concentration:	1 mg/mL
Buffer:	PBS with 0.02 % sodium azide, 50 % glycerol, pH 7.3
Preservative:	Sodium azide
Precaution of Use:	This product contains Sodium azide: a POISONOUS AND HAZARDOUS SUBSTANCE which should be handled by trained staff only.
Storage:	-20 °C
Storage Comment:	Store at -20°C. Avoid freeze / thaw cycles.



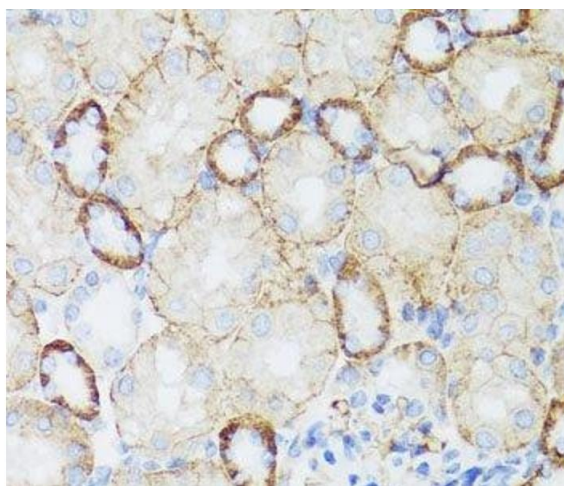
#### Immunofluorescence

**Image 1.** Immunofluorescence analysis of Rat brain using NEFH Polyclonal Antibody at dilution of 1:100. Blue: DAPI for nuclear staining.



#### Western Blotting

**Image 2.** Western blot analysis of extracts of Mouse brain using NEFH Polyclonal Antibody at dilution of 1:1000.



#### Immunohistochemistry (Paraffin-embedded Sections)

**Image 3.** Immunohistochemistry of paraffin-embedded Mouse kidney using NEFH Polyclonal Antibody at dilution of 1:100 (40x lens).

Please check the [product details page](#) for more images. Overall 6 images are available for ABIN7264479.