

Datasheet for ABIN7264523
anti-CDC42EP3 antibody[Go to Product page](#)

1 Image

Overview

Quantity:	200 µL
Target:	CDC42EP3
Reactivity:	Human, Mouse, Rat
Host:	Rabbit
Clonality:	Polyclonal
Conjugate:	This CDC42EP3 antibody is un-conjugated
Application:	Western Blotting (WB)

Product Details

Immunogen:	Recombinant fusion protein of human CDC42EP3 (NP_006440.2).
Isotype:	IgG
Characteristics:	Polyclonal Antibody
Purification:	Affinity purification

Target Details

Target:	CDC42EP3
Alternative Name:	CDC42EP3 (CDC42EP3 Products)
Background:	This gene encodes a member of a small family of guanosine triphosphate (GTP) metabolizing proteins that contain a CRIB (Cdc42, Rac interactive binding) domain. Members of this family of proteins act as effectors of CDC42 function. The encoded protein is involved in actin cytoskeleton re-organization during cell shape changes, including pseudopodia formation. A

Target Details

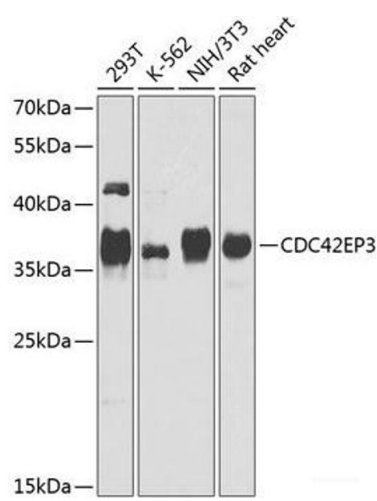
	pseudogene of this gene is found on chromosome 19. Alternative splicing results in multiple transcript variants.
Molecular Weight:	Observed_MW: 37 kDa Calculated_MW: 27 kDa
Gene ID:	10602
UniProt:	Q9UKI2

Application Details

Application Notes:	WB 1:500-1:2000
Restrictions:	For Research Use only

Handling

Format:	Liquid
Concentration:	1 mg/mL
Buffer:	PBS with 0.02 % sodium azide, 50 % glycerol, pH 7.3
Preservative:	Sodium azide
Precaution of Use:	This product contains Sodium azide: a POISONOUS AND HAZARDOUS SUBSTANCE which should be handled by trained staff only.
Storage:	-20 °C
Storage Comment:	Store at -20°C. Avoid freeze / thaw cycles.



Western Blotting

Image 1. Western blot analysis of extracts of various cell lines using CDC42EP3 Polyclonal Antibody at dilution of 1:1000.