

Datasheet for ABIN7264535  
**anti-PPP2R3B antibody**[Go to Product page](#)

## 1 Image

## Overview

Quantity:	200 µL
Target:	PPP2R3B
Reactivity:	Human, Mouse
Host:	Rabbit
Clonality:	Polyclonal
Conjugate:	This PPP2R3B antibody is un-conjugated
Application:	Western Blotting (WB)

## Product Details

Immunogen:	Recombinant fusion protein of human PPP2R3B (NP_037371.2).
Isotype:	IgG
Characteristics:	Polyclonal Antibody
Purification:	Affinity purification

## Target Details

Target:	PPP2R3B
Alternative Name:	PPP2R3B ( <a href="#">PPP2R3B Products</a> )
Background:	Protein phosphatase 2 (formerly named type 2A) is one of the four major Ser/Thr phosphatases and is implicated in the negative control of cell growth and division. Protein phosphatase 2 holoenzymes are heterotrimeric proteins composed of a structural subunit A, a catalytic subunit C, and a regulatory subunit B. The regulatory subunit is encoded by a diverse

## Target Details

set of genes that have been grouped into the B/PR55, B'/PR61, and B''/PR72 families. These different regulatory subunits confer distinct enzymatic specificities and intracellular localizations to the holoenzyme. The product of this gene belongs to the B'' family. The B'' family has been further divided into subfamilies. The product of this gene belongs to the beta subfamily of regulatory subunit B''.

Molecular Weight: Observed\_MW: 80 kDa  
Calculated\_MW: 20 kDa/65 kDa

Gene ID: 28227

UniProt: [Q9Y5P8](#)

Pathways: [PI3K-Akt Signaling, Mitotic G1-G1/S Phases](#)

## Application Details

Application Notes: WB 1:500-1:2000

Restrictions: For Research Use only

## Handling

Format: Liquid

Concentration: 1 mg/mL

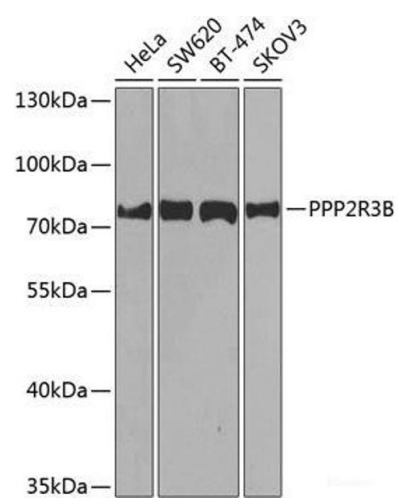
Buffer: PBS with 0.02 % sodium azide, 50 % glycerol, pH 7.3

Preservative: Sodium azide

Precaution of Use: This product contains Sodium azide: a POISONOUS AND HAZARDOUS SUBSTANCE which should be handled by trained staff only.

Storage: -20 °C

Storage Comment: Store at -20°C. Avoid freeze / thaw cycles.



Western Blotting

**Image 1.** Western blot analysis of extracts of various cell lines using PPP2R3B Polyclonal Antibody at dilution of 1:1000.