

Datasheet for ABIN7264537  
**anti-ARHGEF3 antibody**



[Go to Product page](#)

2 Images

Overview

Quantity:	200 µL
Target:	ARHGEF3
Reactivity:	Human, Mouse
Host:	Rabbit
Clonality:	Polyclonal
Conjugate:	This ARHGEF3 antibody is un-conjugated
Application:	Western Blotting (WB), Immunohistochemistry (IHC)

Product Details

Immunogen:	Recombinant fusion protein of human ARHGEF3 (NP_062455.1).
Isotype:	IgG
Characteristics:	Polyclonal Antibody
Purification:	Affinity purification

Target Details

Target:	ARHGEF3
Alternative Name:	ARHGEF3 ( <a href="#">ARHGEF3 Products</a> )
Background:	Rho-like GTPases are involved in a variety of cellular processes, and they are activated by binding GTP and inactivated by conversion of GTP to GDP by their intrinsic GTPase activity. Guanine nucleotide exchange factors (GEFs) accelerate the GTPase activity of Rho GTPases by catalyzing their release of bound GDP. This gene encodes a guanine nucleotide exchange

## Target Details

---

factor, which specifically activates two members of the Rho GTPase family: RHOA and RHOB, both of which have a role in bone cell biology. It has been identified that genetic variation in this gene plays a role in the determination of bone mineral density (BMD), indicating the implication of this gene in postmenopausal osteoporosis. Alternatively spliced transcript variants encoding different isoforms have been found for this gene.

Molecular Weight:	Observed_MW: 60 kDa Calculated_MW: 36 kDa/59 kDa/60 kDa/63 kDa
-------------------	---

Gene ID:	50650
----------	-------

UniProt:	<a href="#">Q9NR81</a>
----------	------------------------

Pathways:	<a href="#">Neurotrophin Signaling Pathway</a>
-----------	--

## Application Details

---

Application Notes:	WB 1:500-1:2000 IHC 1:50-1:200
--------------------	--------------------------------

Restrictions:	For Research Use only
---------------	-----------------------

## Handling

---

Format:	Liquid
---------	--------

Concentration:	1 mg/mL
----------------	---------

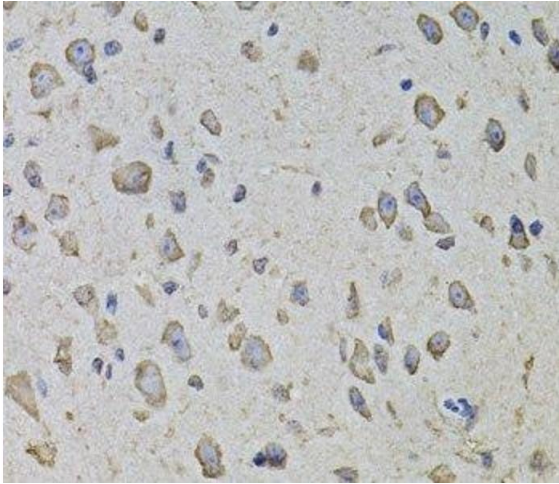
Buffer:	PBS with 0.02 % sodium azide, 50 % glycerol, pH 7.3
---------	---

Preservative:	Sodium azide
---------------	--------------

Precaution of Use:	This product contains Sodium azide: a POISONOUS AND HAZARDOUS SUBSTANCE which should be handled by trained staff only.
--------------------	--

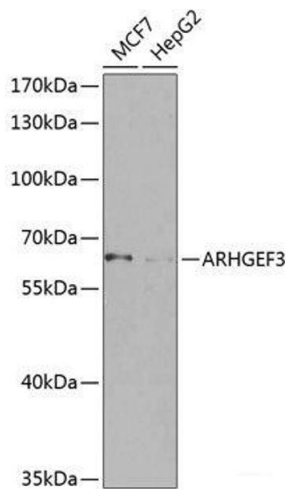
Storage:	-20 °C
----------	--------

Storage Comment:	Store at -20°C. Avoid freeze / thaw cycles.
------------------	---



### Immunohistochemistry (Paraffin-embedded Sections)

**Image 1.** Immunohistochemistry of paraffin-embedded Mouse brain using ARHGEF3 Polyclonal Antibody at dilution of 1:100 (40x lens).



### Western Blotting

**Image 2.** Western blot analysis of extracts of various cell lines using ARHGEF3 Polyclonal Antibody at dilution of 1:1000.