

Datasheet for ABIN7264541  
**anti-RIPK4 antibody**

3 Images



[Go to Product page](#)

### Overview

Quantity:	200 µL
Target:	RIPK4
Reactivity:	Human, Mouse
Host:	Rabbit
Clonality:	Polyclonal
Conjugate:	This RIPK4 antibody is un-conjugated
Application:	Immunohistochemistry (IHC), Western Blotting (WB)

### Product Details

Immunogen:	Recombinant fusion protein of human RIPK4 (NP_065690.2).
Isotype:	IgG
Characteristics:	Polyclonal Antibody
Purification:	Affinity purification

### Target Details

Target:	RIPK4
Alternative Name:	RIPK4 ( <a href="#">RIPK4 Products</a> )
Background:	The protein encoded by this gene is a serine/threonine protein kinase that interacts with protein kinase C-delta. The encoded protein can also activate NFkappaB and is required for keratinocyte differentiation. This kinase undergoes autophosphorylation.

## Target Details

Molecular Weight: Observed\_MW: 90 kDa  
Calculated\_MW: 86 kDa/91 kDa

Gene ID: 54101

UniProt: [P57078](#)

## Application Details

Application Notes: WB 1:500-1:2000 IHC 1:100-1:200

Restrictions: For Research Use only

## Handling

Format: Liquid

Concentration: 1 mg/mL

Buffer: PBS with 0.02 % sodium azide, 50 % glycerol, pH 7.3

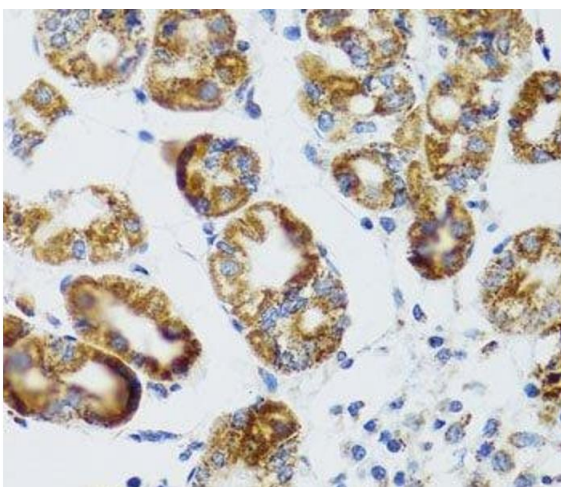
Preservative: Sodium azide

Precaution of Use: This product contains Sodium azide: a POISONOUS AND HAZARDOUS SUBSTANCE which should be handled by trained staff only.

Storage: -20 °C

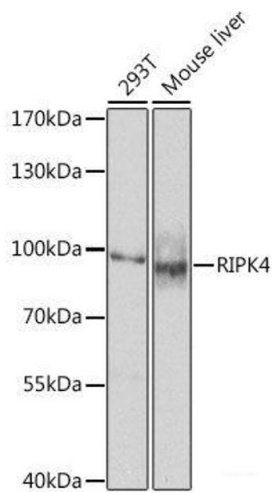
Storage Comment: Store at -20°C. Avoid freeze / thaw cycles.

## Images



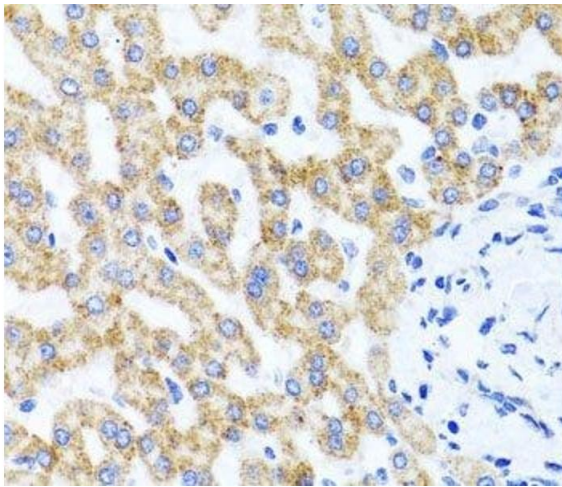
### Immunohistochemistry (Paraffin-embedded Sections)

**Image 1.** Immunohistochemistry of paraffin-embedded Human stomach using RIPK4 Polyclonal Antibody at dilution of 1:100 (40x lens).



### Western Blotting

**Image 2.** Western blot analysis of extracts of various cell lines using RIPK4 Polyclonal Antibody at dilution of 1:1000.



### Immunohistochemistry (Paraffin-embedded Sections)

**Image 3.** Immunohistochemistry of paraffin-embedded Human liver damage using RIPK4 Polyclonal Antibody at dilution of 1:100 (40x lens).