



Datasheet for ABIN7264543
anti-PTCD3 antibody



[Go to Product page](#)

1 Image

Overview

Quantity:	200 µL
Target:	PTCD3
Reactivity:	Human, Rat, Mouse
Host:	Rabbit
Clonality:	Polyclonal
Conjugate:	This PTCD3 antibody is un-conjugated
Application:	Western Blotting (WB)

Product Details

Immunogen:	Recombinant fusion protein of human PTCD3 (NP_060422.4).
Isotype:	IgG
Characteristics:	Polyclonal Antibody
Purification:	Affinity purification

Target Details

Target:	PTCD3
Alternative Name:	PTCD3 (PTCD3 Products)
Background:	PTCD3 (Pentatricopeptide Repeat Domain 3) is a Protein Coding gene. Diseases associated with PTCD3 include Leigh Syndrome, French Canadian Type and Leigh Syndrome. Among its related pathways are Organelle biogenesis and maintenance and Mitochondrial translation. Gene Ontology (GO) annotations related to this gene include ribosomal small subunit binding.

Target Details

Molecular Weight:	Observed_MW: 79 kDa Calculated_MW: 31 kDa/78 kDa
Gene ID:	55037
UniProt:	Q96EY7

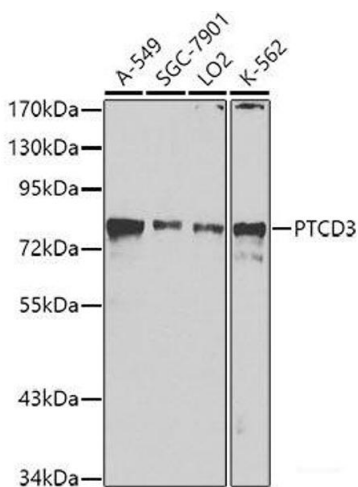
Application Details

Application Notes:	WB 1:500-1:2000
Restrictions:	For Research Use only

Handling

Format:	Liquid
Concentration:	1 mg/mL
Buffer:	PBS with 0.02 % sodium azide, 50 % glycerol, pH 7.3
Preservative:	Sodium azide
Precaution of Use:	This product contains Sodium azide: a POISONOUS AND HAZARDOUS SUBSTANCE which should be handled by trained staff only.
Storage:	-20 °C
Storage Comment:	Store at -20°C. Avoid freeze / thaw cycles.

Images



Western Blotting

Image 1. Western blot analysis of extracts of various cell lines using PTCD3 Polyclonal Antibody at dilution of 1:1000.