



Datasheet for ABIN7264545

## anti-SMEK1 antibody



[Go to Product page](#)

### 3 Images

#### Overview

Quantity:	200 µL
Target:	SMEK1
Reactivity:	Mouse, Human, Rat
Host:	Rabbit
Clonality:	Polyclonal
Conjugate:	This SMEK1 antibody is un-conjugated
Application:	Western Blotting (WB), Immunohistochemistry (IHC)

#### Product Details

Immunogen:	Recombinant fusion protein of human SMEK1 (NP_001271210.1).
Isotype:	IgG
Characteristics:	Polyclonal Antibody
Purification:	Affinity purification

#### Target Details

Target:	SMEK1
Alternative Name:	SMEK1 ( <a href="#">SMEK1 Products</a> )
Background:	PPP4R3A (Protein Phosphatase 4 Regulatory Subunit 3A) is a Protein Coding gene. Among its related pathways are Glucagon signaling pathway and Integrated Breast Cancer Pathway. An important paralog of this gene is PPP4R3B.

## Target Details

Molecular Weight:	Observed_MW: 110 kDa Calculated_MW: 62 kDa/67 kDa/93 kDa/95 kDa
Gene ID:	55671
UniProt:	<a href="#">Q6IN85</a>
Pathways:	<a href="#">Regulation of Carbohydrate Metabolic Process</a>

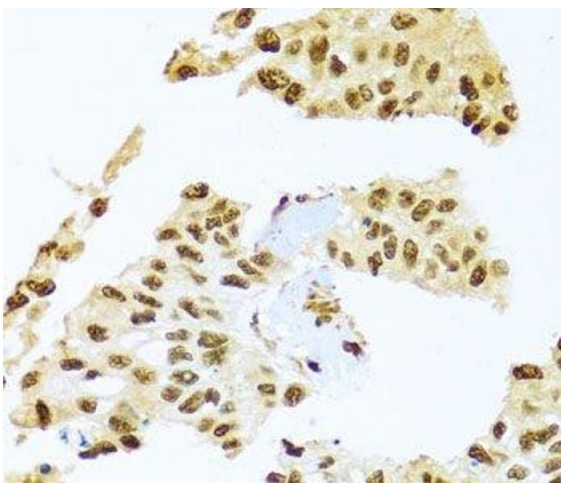
## Application Details

Application Notes:	WB 1:500-1:2000 IHC 1:50-1:100
Restrictions:	For Research Use only

## Handling

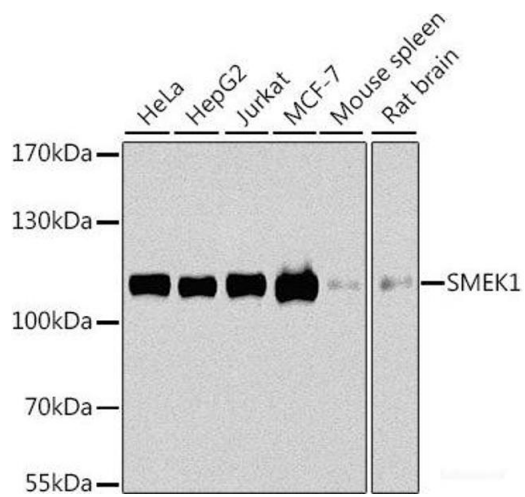
Format:	Liquid
Concentration:	1 mg/mL
Buffer:	PBS with 0.02 % sodium azide, 50 % glycerol, pH 7.3
Preservative:	Sodium azide
Precaution of Use:	This product contains Sodium azide: a POISONOUS AND HAZARDOUS SUBSTANCE which should be handled by trained staff only.
Storage:	-20 °C
Storage Comment:	Store at -20°C. Avoid freeze / thaw cycles.

## Images



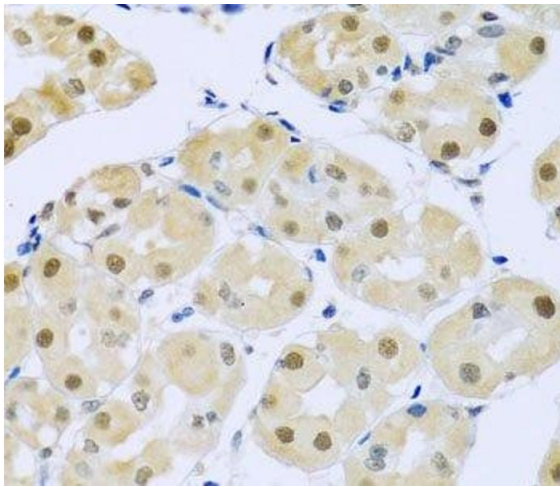
### Immunohistochemistry (Paraffin-embedded Sections)

**Image 1.** Immunohistochemistry of paraffin-embedded Human lung cancer using SMEK1 Polyclonal Antibody at dilution of 1:100 (40x lens).



### Western Blotting

**Image 2.** Western blot analysis of extracts of various cell lines using SMEK1 Polyclonal Antibody at dilution of 1:1000.



### Immunohistochemistry (Paraffin-embedded Sections)

**Image 3.** Immunohistochemistry of paraffin-embedded Human stomach using SMEK1 Polyclonal Antibody at dilution of 1:100 (40x lens).