

Datasheet for ABIN7264577

**anti-GPRC6A antibody**[Go to Product page](#)**1** Image

## Overview

Quantity:	200 µL
Target:	GPRC6A
Reactivity:	Human, Mouse
Host:	Rabbit
Clonality:	Polyclonal
Conjugate:	This GPRC6A antibody is un-conjugated
Application:	Western Blotting (WB)

## Product Details

Immunogen:	Recombinant fusion protein of human GPRC6A (NP_683766.2).
Isotype:	IgG
Characteristics:	Polyclonal Antibody
Purification:	Affinity purification

## Target Details

Target:	GPRC6A
Alternative Name:	GPRC6A ( <a href="#">GPRC6A Products</a> )
Background:	Members of family C of the G protein-coupled receptor (GPCR) superfamily, such as GPRC6A, are characterized by an evolutionarily conserved amino acid-sensing motif linked to an intramembranous 7-transmembrane loop region. Several members of GPCR family C, including GPRC6A, also have a long N-terminal domain.

## Target Details

Molecular Weight:	Observed_MW: 120 kDa
	Calculated_MW: 84 kDa/96 kDa/104 kDa
Gene ID:	222545
UniProt:	<a href="#">Q5T6X5</a>

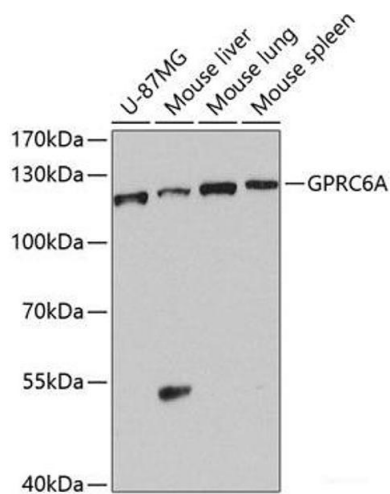
## Application Details

Application Notes:	WB 1:500-1:2000
Restrictions:	For Research Use only

## Handling

Format:	Liquid
Concentration:	1 mg/mL
Buffer:	PBS with 0.02 % sodium azide, 50 % glycerol, pH 7.3
Preservative:	Sodium azide
Precaution of Use:	This product contains Sodium azide: a POISONOUS AND HAZARDOUS SUBSTANCE which should be handled by trained staff only.
Storage:	-20 °C
Storage Comment:	Store at -20°C. Avoid freeze / thaw cycles.

## Images



### Western Blotting

**Image 1.** Western blot analysis of extracts of various cell lines using GPRC6A Polyclonal Antibody at dilution of 1:1000.