

Datasheet for ABIN7264597

**anti-GLP1R antibody****1** Image[Go to Product page](#)

## Overview

Quantity:	200 µL
Target:	GLP1R
Reactivity:	Mouse, Rat
Host:	Rabbit
Clonality:	Polyclonal
Conjugate:	This GLP1R antibody is un-conjugated
Application:	Western Blotting (WB)

## Product Details

Immunogen:	Recombinant fusion protein of human GLP1R (NP_002053.3).
Isotype:	IgG
Characteristics:	Polyclonal Antibody
Purification:	Affinity purification

## Target Details

Target:	GLP1R
Alternative Name:	GLP1R ( <a href="#">GLP1R Products</a> )
Background:	This gene encodes a 7-transmembrane protein that functions as a receptor for glucagon-like peptide 1 (GLP-1) hormone, which stimulates glucose-induced insulin secretion. This receptor, which functions at the cell surface, becomes internalized in response to GLP-1 and GLP-1 analogs, and it plays an important role in the signaling cascades leading to insulin secretion. It

## Target Details

also displays neuroprotective effects in animal models. Polymorphisms in this gene are associated with diabetes. The protein is an important drug target for the treatment of type 2 diabetes and stroke. Alternative splicing of this gene results in multiple transcript variants.

Molecular Weight: Observed\_MW: 53 kDa  
Calculated\_MW: 53 kDa

Gene ID: 2740

UniProt: [P43220](#)

Pathways: [Positive Regulation of Peptide Hormone Secretion](#), [Hormone Transport](#), [cAMP Metabolic Process](#), [Feeding Behaviour](#)

## Application Details

Application Notes: WB 1:500-1:2000

Restrictions: For Research Use only

## Handling

Format: Liquid

Concentration: 1 mg/mL

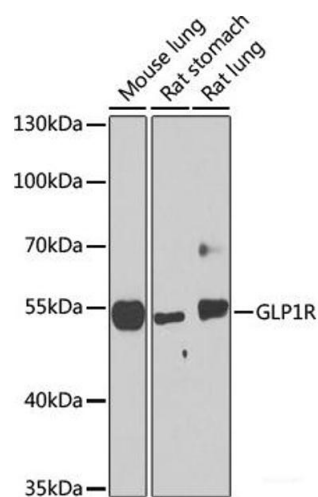
Buffer: PBS with 0.02 % sodium azide, 50 % glycerol, pH 7.3

Preservative: Sodium azide

Precaution of Use: This product contains Sodium azide: a POISONOUS AND HAZARDOUS SUBSTANCE which should be handled by trained staff only.

Storage: -20 °C

Storage Comment: Store at -20°C. Avoid freeze / thaw cycles.



Western Blotting

**Image 1.** Western blot analysis of extracts of various cell lines using GLP1R Polyclonal Antibody at dilution of 1:1000.