

Datasheet for ABIN7264647

**anti-TMC1 antibody**

## 4 Images

[Go to Product page](#)

## Overview

Quantity:	200 µL
Target:	TMC1
Reactivity:	Human, Mouse, Rat
Host:	Rabbit
Clonality:	Polyclonal
Conjugate:	This TMC1 antibody is un-conjugated
Application:	Western Blotting (WB), Immunohistochemistry (IHC)

## Product Details

Immunogen:	A synthetic peptide of human TMC1 (NP_619636.2).
Isotype:	IgG
Characteristics:	Polyclonal Antibody
Purification:	Affinity purification

## Target Details

Target:	TMC1
Alternative Name:	TMC1 ( <a href="#">TMC1 Products</a> )
Background:	This gene is considered a member of a gene family predicted to encode transmembrane proteins. The specific function of this gene is unknown, however, it is known to be required for normal function of cochlear hair cells. Mutations in this gene have been associated with progressive postlingual hearing loss and profound prelingual deafness.

## Target Details

Molecular Weight:	Observed_MW: 88 kDa
	Calculated_MW: 87 kDa
Gene ID:	117531
UniProt:	<a href="#">Q8TDI8</a>
Pathways:	<a href="#">Sensory Perception of Sound</a>

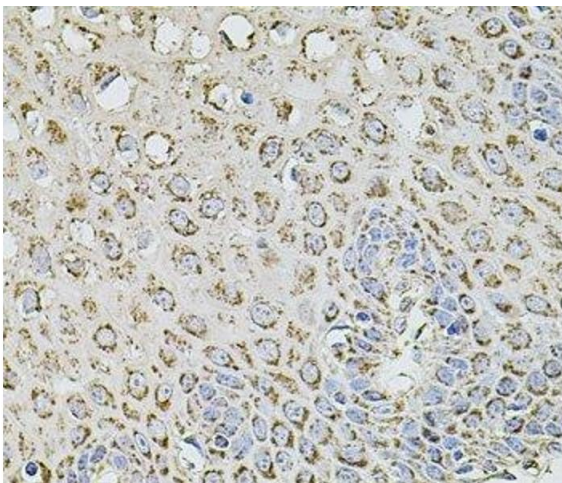
## Application Details

Application Notes:	WB 1:500-1:2000 IHC 1:50-1:200
Restrictions:	For Research Use only

## Handling

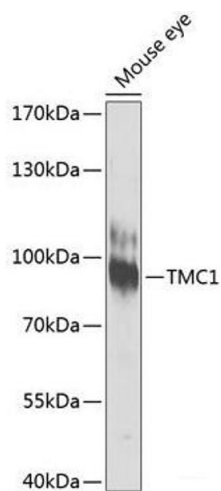
Format:	Liquid
Concentration:	1 mg/mL
Buffer:	PBS with 0.02 % sodium azide, 50 % glycerol, pH 7.3
Preservative:	Sodium azide
Precaution of Use:	This product contains Sodium azide: a POISONOUS AND HAZARDOUS SUBSTANCE which should be handled by trained staff only.
Storage:	-20 °C
Storage Comment:	Store at -20°C. Avoid freeze / thaw cycles.

## Images



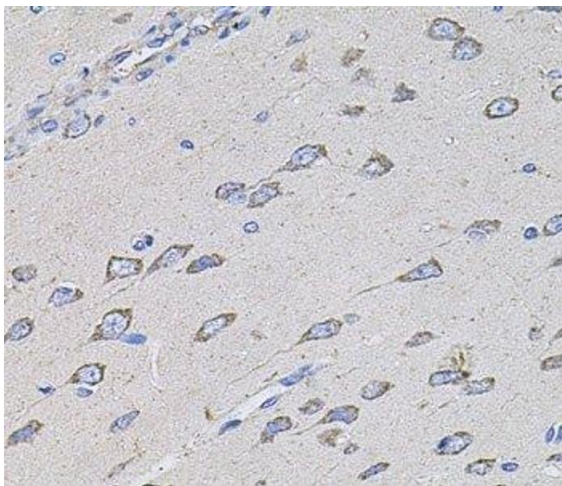
### Immunohistochemistry (Paraffin-embedded Sections)

**Image 1.** Immunohistochemistry of paraffin-embedded Human esophagus using TMC1 Polyclonal Antibody at dilution of 1:100 (40x lens).



#### Western Blotting

**Image 2.** Western blot analysis of extracts of Mouse eye using TMC1 Polyclonal Antibody at dilution of 1:1000.



#### Immunohistochemistry (Paraffin-embedded Sections)

**Image 3.** Immunohistochemistry of paraffin-embedded Rat brain using TMC1 Polyclonal Antibody at dilution of 1:100 (40x lens).

Please check the [product details page](#) for more images. Overall 4 images are available for ABIN7264647.