

Datasheet for ABIN7264655

anti-ADRB3 antibody[Go to Product page](#)**1** Image

Overview

Quantity:	200 µL
Target:	ADRB3
Reactivity:	Human, Rat, Mouse
Host:	Rabbit
Clonality:	Polyclonal
Conjugate:	This ADRB3 antibody is un-conjugated
Application:	Western Blotting (WB)

Product Details

Immunogen:	A synthetic peptide of human ADRB3 (NP_000016.1).
Isotype:	IgG
Characteristics:	Polyclonal Antibody
Purification:	Affinity purification

Target Details

Target:	ADRB3
Alternative Name:	ADRB3 (ADRB3 Products)
Background:	The protein encoded by this gene belongs to the family of beta adrenergic receptors, which mediate catecholamine-induced activation of adenylate cyclase through the action of G proteins. This receptor is located mainly in the adipose tissue and is involved in the regulation of lipolysis and thermogenesis.

Target Details

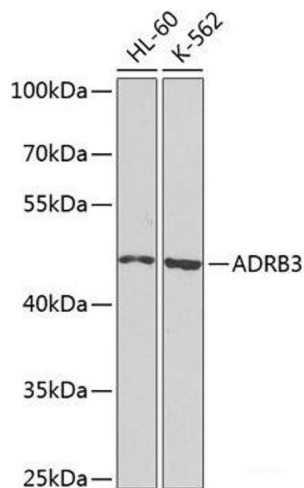
Molecular Weight:	Observed_MW: 47 kDa
	Calculated_MW: 43 kDa
Gene ID:	155
UniProt:	P13945
Pathways:	cAMP Metabolic Process , Regulation of G-Protein Coupled Receptor Protein Signaling , Feeding Behaviour , Brown Fat Cell Differentiation

Application Details

Application Notes:	WB 1:500-1:2000
Restrictions:	For Research Use only

Handling

Format:	Liquid
Concentration:	1 mg/mL
Buffer:	PBS with 0.02 % sodium azide, 50 % glycerol, pH 7.3
Preservative:	Sodium azide
Precaution of Use:	This product contains Sodium azide: a POISONOUS AND HAZARDOUS SUBSTANCE which should be handled by trained staff only.
Storage:	-20 °C
Storage Comment:	Store at -20°C. Avoid freeze / thaw cycles.



Western Blotting

Image 1. Western blot analysis of extracts of various cell lines using ADRB3 Polyclonal Antibody at dilution of 1:1000.