

Datasheet for ABIN7264686

anti-SIX2 antibody[Go to Product page](#)**1** Image

Overview

Quantity:	200 µL
Target:	SIX2
Reactivity:	Rat
Host:	Rabbit
Clonality:	Polyclonal
Conjugate:	This SIX2 antibody is un-conjugated
Application:	Western Blotting (WB)

Product Details

Immunogen:	A synthetic peptide of human SIX2 (NP_058628.3).
Isotype:	IgG
Characteristics:	Polyclonal Antibody
Purification:	Affinity purification

Target Details

Target:	SIX2
Alternative Name:	SIX2 (SIX2 Products)
Background:	This gene is a member of the vertebrate gene family which encode proteins homologous to the Drosophila 'sine oculis' homeobox protein. The encoded protein is a transcription factor which, like other members of this gene family, may be involved in limb or eye development.

Target Details

Molecular Weight:	Observed_MW: 32 kDa
	Calculated_MW: 32 kDa
Gene ID:	10736
UniProt:	Q9NPC8
Pathways:	Protein targeting to Nucleus

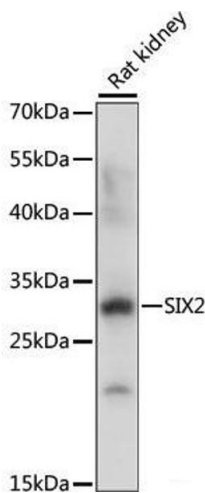
Application Details

Application Notes:	WB 1:200-1:2000
Restrictions:	For Research Use only

Handling

Format:	Liquid
Concentration:	1 mg/mL
Buffer:	PBS with 0.02 % sodium azide, 50 % glycerol, pH 7.3
Preservative:	Sodium azide
Precaution of Use:	This product contains Sodium azide: a POISONOUS AND HAZARDOUS SUBSTANCE which should be handled by trained staff only.
Storage:	-20 °C
Storage Comment:	Store at -20°C. Avoid freeze / thaw cycles.

Images



Western Blotting

Image 1. Western blot analysis of extracts of Rat kidney using SIX2 Polyclonal Antibody at dilution of 1:1000.